

Our Temple



THE MONTHLY BULLETIN FOR TEMPLE EMANU-EL

www.ourtemple.org

Celebrating 125 years of Reform Judaism!

205/933-8037

Birmingham, Alabama

November 2008, Cheshvan/Kislev 5769

Please join us as we welcome the following guests to our Friday night Shabbat services...



Friday, November 7

Congressman Artur Davis

U.S. Representative Artur Davis is beginning his third term in Congress. He represents Alabama's Seventh Congressional District, a twelve county area that spans from Birmingham and Tuscaloosa to the Black Belt.

Congressman Davis will offer his take on the just-concluded Presidential election and his thoughts on the future of our nation.



Friday, November 14

Reverend Stephen Jones

Rev. Stephen Jones of Southside Baptist Church, will join us to offer his thoughts on "What God Wants from Jews and Christians." Members of Southside Baptist will join us for the service and the Shabbat meal to follow. During dinner, we will share a movie made by the Baptist Center for Ethics that features the relationship between Temple Emanu-El and Southside Baptist Church. (On Sunday, November 16, Temple Emanu-El members are invited to Southside Baptist to hear Rabbi Miller address the same topic.)

November 14 dinner menu will include an in-house home-cooked meal by **CoKo and Company (Nadine Cohen)** consisting of "Chicken Nadine," roasted potatoes, carrot coins, tossed salad and dessert. \$15 per adult; \$10 for children 12 and under.



Please RSVP by Tuesday, November 11 to Dina Glass at her direct number: **397-0811** or by email at dglass@ourtemple.org. A vegetarian option will be available only with paid reservation by the deadline date of Tuesday, November 11.

INSIDE OUR TEMPLE:

Our Services	2
Our Activities	3
Our Youth & Education	5

Our Members.....	6
Our Yahrzeits.....	9
Our Contributions	10
Our Sponsors	14

Please remember Temple's Endowment fund in your estate plans, and let us know when you do.

Our Services & Activities

November Shabbat Services

Friday, 10/31

5:45p.m.
Shabbat Service
*(children welcome,
no childcare provided)*

Friday, 11/7

5:00p.m.
Welcoming Oneg for
Renee & Bernie Schulman
5:45p.m.
Simchat Shabbat Service
Guest Speaker:
Rep. Artur Davis
(childcare provided)

Friday, 11/14

5:45p.m.
High School Musical
Family Shabbat Service
5:45p.m.
UPB Shabbat Service
Guest Speaker:
Rev. Steve Jones
*(children welcome,
no childcare provided)*

Friday, 11/21

5:45p.m.
Teacher Shabbat Service
*(children welcome,
no childcare provided)*

Friday, 11/28

5:45p.m.
Spiritual Fitness Shabbat
Service
*(children welcome,
no childcare provided)*

Saturday, 11/1

10:30a.m.
Shabbat Service
*(children welcome,
no childcare provided)*

Saturday, 11/8

10:30a.m.
Shabbat Service
Adult Bat Mitzvah of Lisa
Fishman
*(children welcome,
no childcare provided)*

Saturday, 11/15

10:30a.m.
Shabbat Service
Bat Mitzvah of Hannah
Diamond
(childcare provided)

Saturday, 11/22

9:30a.m.
Tot Shabbat Service
"Alabama vs. Auburn"
10:30a.m.
Shabbat Service
*(children welcome,
no childcare provided)*

Saturday, 11/29

10:30a.m.
Shabbat Service
*(children welcome,
no childcare provided)*

Torah Portion:
Noach

Torah Portion:
Lech L'cha

Torah Portion:
Vayeira

Torah Portion:
Chayei Sarah

Torah Portion:
Toldot

All services are webcast at: www.ourtemple.org

FEELING GELTY ABOUT POVERTY SHABBAT! FRIDAY NIGHT, DECEMBER 5

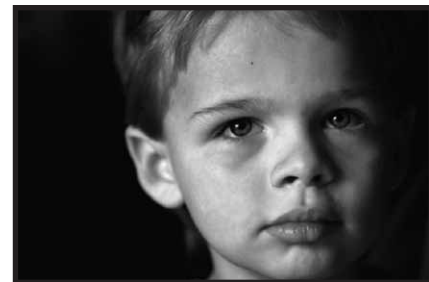
Isn't it ironic that the Jewish word for money sounds a lot like a favorite Jewish emotion? Or, perhaps is it appropriate? In Walker County, West Jefferson County and Birmingham, only minutes from our Temple, there are families in desperate need of our help. Here's the chance to assuage our guilt with gelt and participate in what has become an incredibly powerful program!

Champion a Family

RUSH Initiative is giving Temple Emanu-El a list (with numbers -- not last names) of 130+ families from their First Teachers@home family-centered literacy program. They need us to make their Christmas a happy one!

Here's what YOU NEED TO DO:

1. Email education@ourtemple.org to sign up to champion a family.
2. You'll get a return email that details the ages and gender of each of the members of a family for whom you will purchase a gift for Christmas. Please **DO NOT WRAP!**
3. Then, bring your family on December 5th to Temple for our FEELING GELTY ABOUT POVERTY SHABBAT, along with your gifts, each marked with the assigned family number, and put them into the matching carton in the sanctuary.
4. In the meantime, remind yourself and/or teach your children and/or grandchildren the meaning of the miracle of Chanukah: enough oil to last a day that lasts eight? Perhaps the lesson is that our common resources go a lot further in nurturing our bodies and souls when we learn to share with those who are the greatest in need.



USPS Identification Statement

Publication title	<i>OurTemple</i>
Issue Date	November 2008
Statement of Frequency	Published monthly, except for a combined June/July issue
Organization Name/Address	Temple Emanu-El 2100 Highland Avenue Birmingham, AL 35205-4002
Issue Number	1

Message from Rabbi Miller




By the time you read this, it will be time to get out and vote. This civic duty is especially important for us Jews, who are a small minority in our great land. If we choose/want to exert an influence upon our nation and beyond that to the world at large, we must make our way to the voting booth and do all we can to support those candidates who we believe will best serve our community and our country. I believe that Jews should be politically active, regardless of which party or candidate we support. Numerically, we have never been a force for the world-at-large to consider. We Jews have a unique value system and way of seeing the world, which have had a positive impact on so many other people far beyond our meager numbers. So, get out and vote. Regardless of whether your candidate succeeds or fails, let's continue to work as Jews to positively influence the nature of our country and the world beyond.

Over the next few months, two special guests will come to visit us. On November 7, the Shabbat after the election, Democratic **Congressman Artur Davis** will share with us his take on the election and his read on the future of our country.

Congressman Davis has been a special friend to us in the Jewish community, and you certainly won't want to miss his address. On January 23, the Shabbat after the Presidential Inauguration, Republican **Congressman Spencer Bachus** will share with us his take on the election and his read on the future of our country. Congressman Bachus has been a wonderful friend to many of us, and you won't want to miss his address.

This has been a thrilling election season. The challenges before our country and our local community require visionary and skilled leaders. I hope and pray for their success in helping us right our direction and put us on a solid course for the future. This Election Day will be a crucial moment in our nation's history. Equally important is how we, as Jews and as Americans, will rally together on the day after Election Day to meet these challenges and overcome them.

L'shalom,


Rabbi Jonathan Miller

Special Oneg, November 7

Please join Rabbi Jonathan Miller and Judi Schulman-Miller on **Friday, November 7** for a 5:00p.m. Oneg Shabbat to welcome Judi's parents, **Renee and Bernie Schulman**, who have just moved to Birmingham from New Jersey.

Tot Shabbat presents....



vs.



Wear your team colors with pride!!

Saturday, November 22
9:30a.m. - 12:00p.m.
Weil Hall

Includes:

- ☆ Bagel Nosh
- ☆ Tot Shabbat Service
- ☆ Arts & Crafts with the kids
- ☆ Adult text study with Rabbi Scott Hausman-Weiss

Please RSVP to Dina Glass by Tuesday, November 18 at dglass@ourtemple.org or 933-8037 (ext. 244).

There is no charge for this event.

Jewz on Scene!

Four times throughout the year, from 9:30a.m.-12:00p.m., we will be hosting a wonderful way to enjoy Jewish cinema. For those of you with small children not yet enrolled in Religious School, RSVP to Cathy Moore at templetots@ourtemple.org, and we will be happy to provide free childcare.

November 23: *Only Human*

in its second screening at Temple Emanu-El!! This zany comedy in *Meet the Parents* fashion is a cautionary tale of bringing home that special someone. Leni's family is a handful: there's her blind grandfather, the belly dancer sister with a 5 year old daughter, the brother with a newfound relationship with religion, the pre-menopausal mother and her estranged father. Leni brings her fiancé, Rafi, to meet the family, but all chaos ensues when the Jewish clan discovers he's Palestinian.



***Jewz on Scene* is made possible by the generosity of the Michael and Amy Saag family.**

Temple Tots



Storytelling in Engel Library

Storytelling has begun for Temple Tots in Engel Library every Thursday morning. Everyone who signed up will be contacted throughout the year to be a story teller. We have a slight change in the schedule: 3-year-olds at 9:45a.m. and 18-month-olds at 10:00a.m. More volunteers are needed, so let us know if you want to join us by calling Cathy Moore at 933-8037 x227 or Barbara Capper at 933-8027 x240.

We would like to welcome the following new members to our Temple family:

ברוך ה'בא

Alan & Bootsie Cantor

1005 55th Street South, 35222
(205) 510-5110

Alan and Bootsie Cantor relocated from Tampa, Florida nearly 2 years ago to be close to their daughter Raya Rzeszut, son-in-law Eric and granddaughter Sophie.

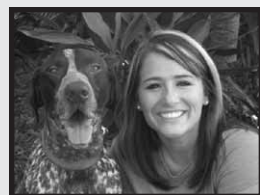
Alan is a part-time professor at UAB and Bootsie is retired from Eastman Kodak and teaching.



Kat Harowitz

101 Leaf Lake Blvd, Apt. 712, 35211
(321) 354-8997

I recently moved from Orlando, FL to Birmingham where I am now a Surgical Physician Assistant student at UAB. I live



here with my dog and am enjoying the laid back pace of Alabama.

Emily & Bob Levine

313 Devon Drive, 35209
(205) 747-0905

Emily and Bob Levine moved to Birmingham from Washington, DC in 2007. Bob is working in the exhibits department at the McWane Science Center, and Emily is teaching therapeutic



horseback riding at Special Equestrians.

Bernard & Renee Schulman

3021 Asbury Lane, 35243
(205) 977-4103

Bernie & Renee have recently moved to Birmingham from Morristown, NJ. Before 1993, when they both retired, Bernie worked as an engineer and Renee as a



Learning Consultant. Their wonderful children are Judi and her husband Rabbi Jonathan Miller and David and Louisa Schulman. Bernie & Renee are the lucky grandparents of Aaron & Lauren Miller, Alana and Benjamin Miller, Ruth and Diana Schulman.

John & Erin Arnold

5612 Alexandria Drive, 35210
(205) 747-0640

Shira Fogel

1239 Cresthill Road, 35213
(205) 591-2173

Jose & Bari Katz

3566 Westbury Road, 35223
(205) 969-2885

Henni Kraselsky

400 University Park Dr., #115, 35209
(205) 414-2004

Henni moved to Birmingham just about a year ago. She was born and raised in Forest Hills, NY. She married Nathan Kraselsky and moved to Dothan in 1943, where she was a very active member of Temple Emanu-El. She has three children, Beth, Barry, and David.

Dale Marcus

4804 Maryland Avenue, 35210
(205) 951-2563

Arthur Press

3822 Montclair Road, 35213
(205) 871-4886

Amy Reese

2642 Denyse Drive, 35243
(205) 542-3988

Susan Shuman

3201 Greendale Road, 35243
(205) 540-1054

Nicole Still

3054 Overhill Road, 35223
(205) 879-8896

Michael Tucker

3709 Crown Ridge Drive, 35243
(205) 215-9835

Rabbi Scott's Corner

Ahhhh, November! Finally, a month without a Jewish holiday. Pheww.....It's a good thing we're done with all those holidays for a while when we celebrate good fortune, offer promises to do better in the future, eat in large amounts and seek to be ever more grateful for the blessings of our lives. Gone are the days, for a while at least, of the holidays when we gather family together, shlepping from one side of the city or country or world to another, reminiscing over past gatherings of the like and showing great appreciation for the kids' or the grandkids' latest "brilliant" decorations they made at school.

But alas, November isn't such a month. For while all of us know that Thanksgiving is a holiday in which all Americans partake, few are aware of the fact that its genesis was the Pilgrims' desire to emulate, of all holidays, Sukkot, from of all backgrounds, Jewish. But, ladies and gentlemen, it's true! The Pilgrims' inspiration for Thanksgiving was Sukkot – a harvest holiday whose intention was to gather friends and family and strangers alike in appreciation for the blessings of our lives.

So, in a roundabout way, Thanksgiving is a Jewish holiday! How about that! But it is true that while the Pilgrims' story of landing at Plymouth Rock isn't exactly ours, so much of their trials and tribulations are. We landed at Ellis Island or Galveston Bay. Our ancestors gave up so much to arrive here in this land of opportunity. Many of us arrived poor, with broken, if any, English, no job, no money to speak of, but they did carry a dream. Their dream was one of self-worth and self-ownership and self-discovery. Its fruition relied upon their belief in themselves, combined with the strength of community, combined with fair-minded laws whose goals were to encourage their assimilation, acculturation and participation in civic life. Just look at the city of Birmingham to know how well we did. We have much to be proud of.

A friend of mine once mentioned that he probed a Jefferson County official on what she thought was the approximate population of the Jewish community in Birmingham. She guessed that we are at least 100,000 strong! Why did she imagine this? Because in her experience, Jews have been involved in so many Birmingham causes, that our numbers would have to reflect our involvement. Well, the 5,500 of us can be proud of what we, and more to the point, earlier generations, have accomplished here. The question for today's youngest and for you parents, your children, is "What have we done for Birmingham lately?"

Happy Thanksgiving!




Mark your calendars!

November 2

Religious School
9:30a.m.-12:00p.m.

November 5

Hebrew School
3:30-5:30p.m.
TEENS & Confirmation
5:45-7:30p.m.

November 9

Religious School
9:30a.m.-12:00p.m.
2nd Grade Parent/Child Workshop

November 12

Hebrew School
3:30-5:30p.m.
TEENS & Confirmation
5:45-7:30p.m.

November 16

Religious School
9:30a.m.-12:00p.m.
6th Grade B'nai Parents Meeting

November 19

Hebrew School
3:30-5:30p.m.
TEENS & Confirmation
5:45-7:30p.m.

November 23

Religious School
9:30a.m.-12:00p.m.

November 26

NO Hebrew School, NO TEENS, NO Confirmation

November 30

NO Religious School

Our Members

Birmingham Hospitality Network

This year's gift wrap at Brookwood Village will be in the same location. Toby Siegel is our coordinator again; she did a fabulous job last year!! This year we have the booth for two days: Sunday 12/21 and Wednesday 12/24.

If you are interested in gift wrapping, volunteering for one of our host weeks, or have any questions about BHN, please contact April Robertson-Thompson at 790-0848 or by email at april.rt@gmail.com.

Community Thanksgiving



Please join the members of the Southside Faith Synagogues and Churches for our community worship on **November 26 at 12:00p.m. at Southside Baptist Church**. We thank God for the bounty God has provided us, and we come together as Americans for an uplifting service to share with each other our gratitude and our hopes. This has become a much-loved tradition for our community, and we hope that Temple Emanu-El will be well represented.

Join the Sewing Guild

Looking for a rewarding way to spend a part of your Wednesday morning? Please join the Sewing Guild on any Wednesday that you can at Temple Emanu-El from 9:30a.m.-12:00p.m.



We can not emphasize enough, YOU DO NOT need to know how to sew! If you can cut, trace, stuff, whip stitch, use a sewing machine, knit or crochet, there is a place for you. Some of our members prefer to knit or crochet at home.

Come and feel the satisfaction of knowing you made a child smile or warmed a cancer patient's heart, For more information, please contact Alise Erdberg at 967-7175.

Caring Committee News

The Caring Committee delivered Rosh Hashanah goody bags to 60 senior members of our congregation. The bags included honey, an apple and an applesauce muffin. A special thank you goes to Bob Marcus, Lee Lichter, Faye Levin and all of our wonderful Caring Committee volunteers who graciously gave of their time and gasoline to assemble and deliver the New Year's packages.



Our next goody bag delivery will be our Chanukah treats. Please let us know if you would like to help us assemble and deliver packages.

The Caring Committee is here for members of our congregation who are going through an illness or a trying life-cycle event. We provide a special delivery for Rosh Hashanah, Chanukah and Passover. We send cards to members of our congregation who are ill or experience the loss of a parent, child or spouse. If needed, we deliver soup to the home-bound.

If you or a family member or friend can use some special attention from our Caring Committee, please contact Julie Levinson-Gabis at bjgabis@bham.rr.com or (205) 930-5824. If you are available to help us assemble or deliver packages, write cards or make phone calls, please let us know by contacting Julie.

Temple Emanu-El is Going Green

Temple Emanu-El is taking steps to reduce waste and be gentle to our environment. The principle of *bal tashchit*, a biblical term meaning "thou shalt not destroy," is seen as a call for Jews to be responsible stewards of our God-given resources. Among other things, we are recycling paper, turning up thermostats in the summer and generally being more vigilant about wastefulness.



One way the congregation can help Temple Emanu-El "go green" is to consider receiving our monthly bulletin online and forego receiving a copy by mail.

Before ever being mailed to the congregation, the bulletin, with all inserts, is posted at www.ourtemple.org. Every month, we will send a special email and link to the bulletin to view on-line or download.

We will continue to mail bulletins to congregants who prefer to have paper copies. Those of you who prefer to receive the monthly bulletin electronically, please contact Marianne at 933-8037, ext. 239 or marianne@ourtemple.org.

WHAT'S HAPPENING WITH OUR SISTERHOOD?

Mah Jongg Mania receives rave reviews!

"It was so much fun!..."We should do it every month!"

Mah Jongg Mania was a magical evening for beginning AND experienced players! Almost 50 Mah Jongg mavens showed up to nosh, play & kibbitz with friends old and new at Sisterhood's first program of the year.



November Sisterhood Board Meeting

All sisterhood members are welcome!

We will meet at Temple on November 12, Wednesday evening, at 6:00p.m. Bring your dinner to eat while we plan activities for the coming year. *Hope to see you there!!*



Special thanks to our teachers: **Lisa Bebenek, Joyce Spielberger, Barbara Capper, Lori Weil, Alison Weil, Rhonda Siegel** and **Loretta Newfield**. Another big thank you to **Sissy Toronto** and **Loretta Newfield** for

the fabulous food, and to **Wendy Martin, Lori Weil, Kim Roth** and **Alisa Nadler** for advertising and organizing this wonderful evening.

Congratulations to door-prize winners **April Robertson-Thompson** and **Jessica Freehling-Kazzie**.

Sisterhood Bulb Shop

Thank you to all who purchased bulbs from our Bulb Shop! If you still need to pick up your bulbs, please call Loretta Newfield at Temple (933-8037) to arrange a time.

We still have some extras on hand...so if you would like to purchase some of our glorious Dutch bulbs, just give Loretta a call. ***These make wonderful holiday gifts!!!***

Each month, Temple Emanu-El chooses a specific cause for our Tzedakah Box. Our November charity is COMMUNITY KITCHENS OF ALABAMA.

Community Kitchens of Birmingham is a nonprofit organization dedicated to feeding anyone who is hungry. A recent survey of Jefferson County reported that there are 80,000 families who are unsure from where their next meal will come. Community Kitchens serves over 112,000 meals annually at their two locations. These meals help nourish the body and spirit of those in need. For more information, visit their website: www.thecommunitykitchens.org.



Mark your calendars NOW...

You won't want to miss Friday, January 30 -- it is time for our fabulous **Sisterhood Shabbat!**

This special Friday night service will be followed by a delicious, homemade Shabbat dinner lovingly prepared for you by Sisterhood.

So, save the date, and join us for a fabulous evening!!

Precious Legacy

We will be sending Chanukah packages the first week in December to help students make it through finals. They will arrive before school is out for the semester. **We will need your undergraduate student's name by Friday, November 21 to be included in this first mailing.**

If you would like your undergraduate student to receive these delicious gifts, please contact Denise Lewis at 967-6875 or Db150@aol.com. Please include your student's name, school name, grade and college address for packages. If you would like to help with this project, please contact Denise. We will need volunteers to bake, provide store-bought items, purchase and stuff the gift bags, as well as box, address and mail the gifts in December and March. What a fun way to stay in touch!



Please note that even if your student was registered with us last year, you will need to re-register them with us again this year! So many of our students change addresses (even schools!) each year that we do not use prior information.

Our Members

B'nei Mitzvah

Lisa Fishman

Adult Bat Mitzvah

November 8

I have been a temple member here for about four years. I'm originally from Huntsville but have been in Birmingham for ten years. I teach preschool at a Montessori school in the area. Celebrating with me are my parents, sister and her family, grandmothers and other relatives from all over the country.

Hannah Diamond

November 15

Hannah is the daughter of Amy & David Saab and Tracy & Seth Diamond. Her grandparents are James & Maggie Begun, Jerry & Candy Diamond, Margorie Sugar, Ramsey & Gloria Saab, Rhoda & Marvin Link and Rochelle & Floyd Nadler. Celebrating with Hannah are her brothers and sisters, Ilyse, Sophie, Henry and Zachary.



Honorable Menshens

Evelyn Allen, Gail Bayer, Joan Becker, Robin Berger, Alison Berman, Barbara Capper, Lynne Cohen, Linda Cohn, Sharon Cutter, Milton Datnoff, Matthew Derr, Carlotta Dorn, Carol Gross, Ginger Held, Gail Herman, Mackie Horowitz, Fred Kanter, Faye Levin, Bob Marcus, Candy Meyerson, Alisa Nadler, Loretta Newfield, April Robertson-Thompson, Kim Roth, Ina Russakoff, Howard Schultz, Irvin Siegal, Stephanie Sklar, Liz Slive, Marilyn Tanner, Ben Weil, Lori Weil, Janet Wertheimer.

Special Thanks...

***Judy & Hal Abroms** have given the wrought iron and granite table that is in the back entrance to the Temple in memory of their parents, Ruth and Abe Abroms and Lill and Lou Estrach. The table adds beauty to that space and can be used for many purposes, including holding flowers, sign-in books for celebrations and challah after Shabbat services.*

*Two Chapel Chairs were given by the **B.L. and Mitzi Aarons Fund** of the Birmingham Jewish Foundation. All of the income from this fund goes to Temple Emanu-El.*

*Previously two Chapel chairs were given by **Molly Gotlieb** and **Marcia Unger** in memory of Herman Gotlieb.*

Mazel Tov to...

Carl and Jennifer Mittleman of Aurora, Colorado on the birth of their son, Seth Morris Mittleman, July 21. Paternal grandparents are **Linda & Bruce Mittleman**.

Ann & Paul Rich on the marriage of their son David Rich to Beth Fahey on August 9 in San Diego, California.

AZA members who were elected to the Board for the upcoming term: President (Gadol) - Ellis Bernstein, Vice President (S'gan) - Zach Corenblum, AIT Dads (Moreh) - **Jay Humphries** and **David Pizitz**, Treasurer (Gizbor) - Jacob Lapidus, Secretary Corresponding (Mazkir) - **Robert Ascherman**, Secretary Recording (Mazkir) - **Blake Thomas** and Judaic Chairman and Community Service/Social Action chairman (Shaliach) - Ethan Krell.

Frances & Arnold Roseman on their special 67th wedding anniversary on September 4.

Frances Roseman on her special 90th birthday on September 10.

Cissy & Leonard Held on the marriage of their grandson, Jeffery Harris Gilbert, to Marci Rosemarin of Houston on August 16.

Jennifer Goldstein on graduating with honors from Emory University's Goizueta School of Business on May 12. Parents are **Debra & Joel Goldstein**.

Carleton & Bruce Sokol and to **Roberta & Jim May** on the birth of their granddaughter, Lila Reese Schulman, on Monday, August 11. Lila's parents are Jenny & Andy Schulman of Atlanta.

Jeffrey & Janet Max on the birth of their daughter, Celia Madeline, on September 9. Grandparents are **Laurie Max** and Rodney and Ivania Max. Great-grandparents are Bette Gilbert and Howard and Ruth Max.

Lee Conn on being nominated to Birmingham Venture Club's Entrepreneurs Accelerator Program (EAP). The Birmingham Venture Club identifies 12 young entrepreneurs per year to go through a series of classes that focus on management, systems, capital raises, etc.

David & Rebecca Joyner on the birth of their daughter, **Annabelle Marley Joyner**, on August 14. Big sister is **Delia**.

Will & Leigh Kraselsky Haver, on the birth of their daughter, Elizabeth Meyers Haver, on Monday, September 22. Big brother is Sam Haver, grandmother is **Dale Marcus**, great grandmother is **Henni Kraselsky** and great aunt & uncle are **Donna & David Kraselsky**.

November Yahrzeits

May the beauty of their lives shine forever, and may we always bring honor to their memory.

October 31 - November 1

Ida K. Beiman
 Julian L. Bernheim
 Max Binder
 Melvin Bluestein
 Adolf Blutman
 Frank Simpson Cook, Sr.
 Rosalee G. Dannis
 Dave Eisenberg
 Carl M. Feldman
 Irwin M. Fishman
 Harry Goldner
 Gloria Meisel Greenberg
 Patricia Hamrick
 Bernice G. Hirsch
 Florette Hirsch
 Charles D. Klotzman
 Louise Levine Kombar
 Hyman Maurice Levine, Sr.
 Nathan Levy
 Berney B. Loveman
 Annie Luria
 Mildred S. Marlowe
 Marjorie Hanover Marlowe
 Hilda Mendelsohn
 Fay Oppenheim Odess
 Sam Picard, Jr.
 Eleanor Levy Roseman
 Ruth D. Rosenberger
 Rosa Israel Sachs
 Edward N. Salomon
 John Sandson
 M. Edna Schoen
 David Schultz
 Morton Simpson
 Allan I. Sirkin
 Milton "Buddy" Sterman
 Albert Zern

November 7-8

Leanore Aland
 Herbert J. Baum, Jr.
 Herman M. Beck
 Helen Berland
 Sol Berry
 Herbert Meyer Besser
 Henry Blumenblatt
Isadore Bonfield
 Donald H. Broudy
 Helen Cohen
 John Cowart
 Manuel Dorsky
 Lawrence Friedman
 Louis Lazarus Friedman
 Bill Glandon
 Clarence Gluckcord
 Hinky Gold
 Miriam Goldberg
 Mervyn Helper
 Hortense Helzberg
 Minnie Hudson
 Irving Hulnick
 Freda Josephs
 Norman Lefkovits
 Sadie Levy
 Morton Jerry Marks
 Alvin Martin
 Harold P. Matles
 Gerson May
 Greta Melomed
 Dr. John Odess
 Benjamin Patterson
 Harry Rosenblum
 Isadore Rotenstreich
 Rose S. Schwartz
 Bernard Steiner
 Paul Thompson
 Beatrice Tucker
 Lillie Weinstein
 Estelle Wertheimer
 Paul Wiener
 Kenneth Eisner Wyker

November 14-15

Edward Berman
 Margaret L. Blumenthal
 Robyn Cohen
 Lawrence Jerome Cohn
 Bessie S. Cooper
 Joe Dannis
 Marion W. Freehling
 Morris Goldforb
 Jay Randall Gotlieb
 Joseph Gotlieb
 Naomi Carroll Haimsohn
 Howard J. Helzberg
 Molly Schulman Isenberg
 Margaret Johnson
 Harry Koch
 Scott Kraselsky
 Paul Lande
 Sol Levy
 Milton Mack
 Flora May
 Sylvia Mazer
 Viktor Melekhin
 Barbara S. Michael
 Margaret Miller
 Sophie Varlow Nedoss
 Beckie Pearl
 Gerald Popkin
 Dora Ravitz
 Hyman Rosner
 Grace E. Sals
 Lillian Schultz
 Abraham Slaughter
 Emanuel Solomon
 Harry M. Strauss, Sr.
 Muriel Sutker
 Jody Thomas
 David L. Warren
 Sol Bertram Weil
 Roberta Yerton

November 21-22

Harold Athey
 Herbert L. Blank
 Evelyn Blum
 Michael Jon Cohen
 James Joseph Crapia
 Taft Epstein
 Irma Rae Bloch Erdreich
 Estelle Erlick
 Bertha Engel Erlick
 Isaac Louis Fabian
 Noah Garden
 Ida W. Grafman
 Jacob Greenberg
Freda Newfield Greenfield
 Helen Friedman Gregg
 Louis Henry Hirsh
 Nancy Hoffman
 Elias Inzelbuch
 Rose Jaffe
 Nathan Aaron Kahn
 Maurice Lapidus
 Ben Levy
 Frances Mack
 Sarah Meadows
 Marilyn Michael
 Bertha Peresman
 Phyllis Russell Rogers
 Lena Roobin
 Beatrice Schnee
 Benjamin Sears
 Albert Segal
Irving M.(Boots) Silverfield
 Eddy Sokol
 Reba Strauss
 April Lee Weil
 Elizabeth Kronenberg
 Weinstein
 Irwin Wolf
 Burton Zavelo

November 28-29

William Abroms
 Ida Bellows
 Adolphe E. Berke
 Jack Berland
 Ray Schall Blatzer
 Henry H. Bowman
 John M. Chapman, Sr.
 Evelyn A. Collat
 Bert Damsky
 Hermyn R. Fox
 Arthur Goodman
 Rose Goodman
 Gilel Gurevitch
 Basya Gurevitch
 Lisa Gurevitch
 Dr. James Haimsohn
 Noah Leon Hart
 Russell Hudson
 Dodie Jaffe
 Benjamin Jaffe
 Bertha Goldner Kahn
 Herman Marcus
 Stephen Yale Mazer
 Dan Miller
 Richard Reese
 Rebecca Rogoff
 Luther Roper
 Selma Sachs
 Dora Weinstein Schreiber
 Goldye B. Shandler
 Dr. Abraham Siegel
 Ralph Richard Silver, Jr.
 Sara Rogoff Sokol
 Samuel Solomon
 Samuel B. Stern
 Ruth Swedlaw
 Abe Burt Tenenbaum
 Seymour S. Warren
 Dr. Roland Weinsier
 Ellis Weinstein
 Ida Zaslofsky

Condolences to...

Kay (Robert) Lewis, Sunny Franklin, and Dave (Wendy) Goldstein and the entire family on the death of their mother, **Adele Goldstein**, on Saturday, September 6.

Dr. Wayne and Denise Lewis on the death of their son, **Dr. Nathan Lewis**, on Sunday, September 14. Our condolences also to his wife, Kim, his children, Mackenzie, Allyson and Connor, his sisters, Carolyn and **Sara Lewis**, and his grandparents, Margaret and Doug Kelly.

Marjorie Wertheimer and the entire family on the death of Marjorie's husband **Leonard "Sonny" Wertheimer, Jr.** on Tuesday, September 16. His son and daughter are **Leonard (Janet) Wertheimer, III**, **Barbara W. Hirsch**, and his grandchildren are **Michael, Amy, Gordy** and **Meg**.

Fred (Doris) Kanter and the entire family on the death of Fred's brother, Edward L. Kanter of Denver, Colorado on Saturday, September 20.

Our Contributions

We appreciate the thoughtfulness of those who support Temple Emanu-El, including our Campaign and Endowment Fund, by remembering and honoring their friends and loved ones through their generous contributions. Thank you for the following gifts received through September 24, 2008.

Endowment Fund Contributions

GENERAL ENDOWMENT FUND

In Memory Of:

Jean Biernstein

by Mary Lynne & Eli Capilouto

Bessie Binder

by Gertrude Goldstein

Frances Fried

by Evelyn Allen

Jean Biernstein

by Lynne & Mark Cohen

Robert Engel

by Linda & Don Horwitz

by Frances & Arnold Roseman

Selma Friedman

by Florine Ettinger

Adele Goldstein

by Marian Breyer

by Mary Lynne & Eli Capilouto

by Regina Capilouto

by Lawrence Goldstein

by Barbara & Harvey Gotlieb

by Ethel Fleisher

by Joanna & Irvin Gotlieb

by Blanche Rogoff

by Kit & Rick Roth

by Anne Silberman

Harold Hirsch

by Ann & Pete Roth

Edward Kanter

by Carol & Bob Gross

by Judy & Herbie Miller

Nathan Lewis

by Margo & Michael Pitt

by Blanche Rogoff

by Anne Silberman

Luna Piha

by Regina Capilouto

Vernon Rosenthal

by Barbara & Harvey Gotlieb

by Lucy & Buddy Schulhafer

Irving Rubel

by Bernice Barstein

by Lawrence Goldstein

by Cissy & Leonard Held

by Marion Solomon

Leonard Wertheimer, Jr.

by Bernice Barstein

by Mary Lynne & Eli Capilouto

by Ethel Fleisher

by Lawrence Goldstein

by Barbara & Harvey Gotlieb

by Carol & Bob Gross

by Judy & Herbie Miller

by Margo & Michael Pitt

by Blanche Rogoff

by Lucy & Buddy Schulhafer

by Anne Silberman

Wishing Good Health To:

Jack Abraham

by Barbara & Harvey Gotlieb

Janet Goldfarb and Virginia Hyman

by Judy & Herbie Miller

Peter Jablow

by Blanche Rogoff

Lill Lapidus

by Lucy & Buddy Schulhafer

Marianne Porterfield

by Carol & Bob Gross

Jerry Sklar

by Barbara & Harvey Gotlieb

Ellen Sokol and Marilyn Tanner

by Gail & Charles Herman

In Honor Of:

Anniversary of Gladys & Karl Friedman

by Blanche Rogoff

Anniversary of Cissy & Leonard Held

by Lawrence Goldstein

Birth of Benjamin Bresler, son of Miriam Sokol

by Mary Lynne & Eli Capilouto

Marriage of Emily & Sam Friedman

by Wendy Filler

Marriage of Amy, daughter of Susan & Gary Goldstein

by Judy & Herbie Miller

Special birthday of Regina Capilouto

by Florine Ettinger

by Blanche Rogoff

Special birthday of Gayle Leitman

by Barbara & Harvey Gotlieb

NAMED ENDOWMENT FUNDS

In Memory Of:

Andy Abroms

by Bunny & Joel Rotenstreich

to Bunny & Joel Rotenstreich Fund

Jean Biernstein, Bob Engel, Anne Reese and Dave Solomon

by Faye & Robert Levin

to Levin Family Fund

Evelyn and Roger Blum

by Nancy & David Denney

to Nathan Wayne Lewis Fund

Nell Bresler

by Miriam Sokol

to Cemetery Care Fund

NEW ENDOWMENT FUNDS

The Rabbi Grafman Endowment Fund gratefully acknowledges the generosity of the following, who have recently established unrestricted funds to benefit our Temple:

The Elise & Irving Rubel Fund

established by a gift from Marjorie & Ted Mayor

The Marion & Dave Solomon Fund

established by gifts from Marion Solomon and the estate of Dave Solomon

The Nathan Wayne Lewis Memorial Fund

established by Denise & Wayne Lewis

The Grafman Endowment Fund's Annual Gift Program Is Here!

Pledges are due by December 31st

The Endowment Fund is our primary vehicle for ensuring long-term financial stability for our Temple -- plus it enhances many of the congregation's special programs and provides scholarships for our youth. Please join the 200 members who annually make gifts to support our Temple in this important way. We welcome annual gifts at any level -- from \$25 and up.

Call Barbara Zaslofsky or Jann Blitz in the Endowment Office for details. Our new direct dial number is: 933-8397.

Our Contributions

Endowment Contributions, cont.

In Memory Of:

Jack Dorsky

- by Faye & Robert Levin
to Levin Family Fund
- by Denny Marcus & Andre Schnabl
to Letty & Bob Marcus Fund
- by Karen & Joel Piassick
to Karen & Joel Piassick Fund
- by Jean & Jerry Sklar
to Jean & Jerry Sklar Fund

Frazier Dughi, Shirley Goldberg and Gaynelle Greene

- by Karen & Joel Piassick
to Karen & Joel Piassick Fund

Adele Goldstein

- by Lynn & Bert Bloomston
- by Ellen Dorsky
- by Florine Ettinger
- by Mary Farrar
- by Barbara Franke, Marilyn Hubert,
Gayle Venet and Polly Westfall
- by Gertrude Goldstein
- by Milton Jernigan
- by Elaine Kartus
- by Mrs. Wesley Lassen & The Cook Store
- by Leah & Ronald Leaf
- by Judy Luks
- by Roslyn Mazer
- by Oak Street Hair Group
- by Rachel Rosenthal
- by Elise Rubel
- by Gail & Harry Bayer
to Gail & Harry Bayer Fund
- by Debra & Joel Goldstein
to Hannah & Hyman Goldstein Fund
- by Rosalie & Raymond Gotlieb
to Rosalie & Raymond Gotlieb Fund
- by Jimmie Hess
to Hess Chapel Fund
- by Bunny & Joel Rotenstreich
to Bunny & Joel Rotenstreich Fund
- by Ferne Seigel
to Rose & Nathan Rotenstreich Fund
- by Jean & Jerry Sklar
to Jean & Jerry Sklar Fund
- by James Sokol
to James Sokol Fund
- by Carol Solomon
to Muncy Abrams Fund

Harold Hirsch and Eleanor Steinlauf

- by Debra & Joel Goldstein
to Hannah & Hyman Goldstein Fund

Edward Kanter

- by Jane & Joe Bluestein
to Bluestein Family Fund
- by Chu-Chi & Bobby Fierman
to Weinman/ Fierman Family Fund
- by Barbara & Larry Fine
to Barbara & Larry Fine Fund
- by Carol & Donald Herman
to Carol & Donald Herman Fund

- by Gayle & Eddie Leitman
to Gayle & Eddie Leitman Fund
- by Loretta Newfield
to Mayer Newfield Fund
- by Judy & Jimmy Rotenstreich
to Judy & Jimmy Rotenstreich Fund
- by Bunny & Joel Rotenstreich
to Bunny & Joel Rotenstreich Fund
- by Ferne Seigel
to Rose & Nathan Rotenstreich Fund
- by Marilyn & Murray Tanner
to Hannah & Hyman Goldstein Fund

Allen Koslin

- by Faye & Robert Levin
to Levin Family Fund
- by Jean & Jerry Sklar
to Jean & Jerry Sklar Fund

Nathan Wayne Lewis

- by Amanda Allen
- by Robin & Marc Bloomston
- by Patsy Brown
- by Lillie Buchstane
- by Nancy & David Denney
- by Ellen Dorsky
- by Carlotta Dorn
- by Franklin First United Methodist
- by Julie Levinson-Gabis & Bud Gabis
- by Ashley Ann Halfman
- by Cecille & Max Herzog
- by Eli Jackson III
- by Brian Levine
- by Becky May
- by Sara & Thomas Moody
- by Ilse Nathan
- by Jamie & Greg Odrezin
- by Irene Raymond
- by Amy & Michael Saag
- by Staff of Savannah Bank
- by Dorothy Shiland
- by Gail & Abe Shuster
to Nathan Wayne Lewis Fund
- by Gail & Jeffrey Bayer
to Gail & Jeffrey Bayer Fund
- by Janet & Morton Goldfarb
to Rabbi Morris Newfield Fund
- by Elise Goldman
to Figtree Fund
- by Debra & Joel Goldstein
to Hannah & Hyman Goldstein Fund
- by Judy & Gerson May
to Judy & Gerson May Fund
- by Loretta Newfield
to Mayer Newfield Fund
- by Bunny & Joel Rotenstreich
to Bunny & Joel Rotenstreich Fund
- by Lori & Jimmy Weil
to Patterson Fund

Robert Loeb

- by Faye & Robert Levin
to Levin Family Fund
- by Amy & Michael Saag
to Patterson Fund

Pearle Romanoff

- by Judy & Gerson May
to Judy & Gerson May Fund

Vernon Rosenthal

- by Frances Cypress
to Cypress Family Fund
- by Letty & Bob Marcus
to Letty & Bob Marcus Fund
- by Rosalie & Raymond Gotlieb
to Rosalie & Raymond Gotlieb Fund

Irving Rubel

- by Lee Ascherman & Lindsay Levine
- by Carol & Gary Berman
- by Bonnie & Bill Daggett
- by Laura & Gill Deford
- by Beverly & Stanley Erdreich
- by Gertrude Goldstein
- by Joyce Helzberg
- by Rita & Sol Kimerling
- by Richard Robinson
- by Scholastic, Inc.
- by Lucy & Buddy Schulhafer
- by Linda Shuster & Jesse Ostrow
to Elise & Irving Rubel Fund
- by Rosalie & Raymond Gotlieb
to Rosalie & Raymond Gotlieb Fund
- by Faye & Robert Levin
to Levin Family Fund
- by Carol & BG Minisman
to Rabbi Morris Newfield Fund
- by Bunny & Joel Rotenstreich
to Bunny & Joel Rotenstreich Fund
- by Amy & Michael Saag
to Patterson Fund
- by Ferne Seigel
to Rose & Nathan Rotenstreich Fund

Hortense Shapiro

- by Amy & Michael Saag
to Patterson Fund

Leonard Wertheimer, Jr.

- by Lynn & Bert Bloomston
- by Tim Callahan
- by Mayer Cohen
- by Catharine & Alex Davies, Jr.
- by Ellen Dorsky
- by Ruth & Marvin Engel
- by Feld, Hyde, Wertheimer, Bryant
and Stone
- by Donna & Howard Goldberg
- by Donna & David Kraselsky
- by Joan & Mike Krawcheck
- by Gayle & Eddie Leitman
- by Kay & Bob Lewis
- by Cindy & Harvey May
- by Anita & Robert May
- by Irene Raymond
- by Elise Rubel
- by Dorothy Shiland
- by Jeffrey Stern
- by Isabelle Sterne
- by Sam Tenenbaum, Jr.

Our Contributions

Endowment Contributions, cont.

In Memory Of:

Leonard Wertheimer, Jr., cont.

by Norma Warren

to Wertheimer Family Fund

by Judy & Hal Abrams

to Abrams Flower Fund

by Judy Todd Abrams & Ted Abrams

to Abrams/Aland Fund

by Gail & Harry Bayer

to Gail & Harry Bayer Fund

by Gail & Jeffrey Bayer

to Gail & Jeffrey Bayer Fund

by Nancy & Harold Blach, Jr.

to Blach Family Fund

by Miriam Cohn

to Friend Community Fund

by Frances Cypress

to Cypress Family Fund

by Chu-Chi & Bobby Fierman

to Weinman/ Fierman Family Fund

by Barbara & Larry Fine

to Barbara & Larry Fine Fund

by Debra & Joel Goldstein

to Hannah & Hyman Goldstein Fund

by Gloria & Bill Howton

to Gloria Howton Fund

by Letty & Bob Marcus

to Letty & Bob Marcus Fund

by Judy & Gerson May

to Judy & Gerson May Fund

by Carol & BG Minisman

to Rabbi Morris Newfield Fund

by Bunny & Joel Rotenstreich

to Bunny & Joel Rotenstreich Fund

by Ferne Seigel

to Rose & Nathan Rotenstreich Fund

by Marion Solomon

to Marion & Dave Solomon Fund

by Marilyn & Murray Tanner

to Hannah & Hyman Goldstein Fund

by Lori, Jimmy, Brandon & Alec Weil

to Patterson Fund

Wishing Good Health To:

Jack Abraham

by Betty Goldstein

to Betty Allenberg Goldstein Fund

Bernice Barstein, Jane Bluestein, Cathy

O. Friedman, Lawrence Goldstein, Mollie

Gotlieb, Sadye Lewis, Sandra Russell, Irvin

Siegel and Marilyn Tanner

by Jean & Jerry Sklar

to Jean & Jerry Sklar Fund

Sidney Bernstein

by Frances Cypress

to Cypress Family Fund

Ralph Levene

by Nancy & Harold Blach, Jr.

to Blach Family Fund

by Jean & Jerry Sklar

to Jean & Jerry Sklar Fund

Allen Meisler

by Carole & Michael Pizitz

to Carole & Michael Pizitz Fund

In Honor Of:

Anniversary of Patsy & Charles Collat, Sr.;

Special birthday of Pam Cohen

by Jean & Jerry Sklar

to Jean & Jerry Sklar Fund

Anniversary of Cissy & Leonard Held

by Janet & David Aarons

to Aarons Family Fund

by Nancy & Harold Blach, Jr.

to Blach Family Fund

by Barbara & Larry Fine

to Barbara & Larry Fine Fund

by Carole & Michael Pizitz

to Carole & Michael Pizitz Fund

by Amy & Michael Saag

by Pat Weil

to Patterson Fund

by Jean & Jerry Sklar

to Jean & Jerry Sklar Fund

Anniversary of Frances & Arnold

Roseman;

Special birthday of Frances Roseman

by Loretta Newfield

to Mayer Newfield Fund

Anniversary of Rosalyn & Irvin Siegal;

Special birthday of Oscar Cohen

by Amy & Michael Saag

to Patterson Fund

Bar Mitzvah of Jake Fleisher, grandson of

Joy & Robert Fleisher

by Frances Cypress

to Cypress Family Fund

Bar Mitzvah of Seth Perlman, grandson of

Bernice & Ben Perlman

by Frances Cypress

to Cypress Family Fund

by Barbara & Larry Fine

to Barbara & Larry Fine Fund

Bat Mitzvah of Jenna Becker,

granddaughter of Joan & Jack Becker

by Ruth & Marvin Engel

to Becker Family Fund

Bat Mitzvah of Allie Garber

by Betty Goldstein

to Betty Allenberg Goldstein Fund

by Amy & Michael Saag

to Patterson Fund

by Ferne Seigel

to Rose & Nathan Rotenstreich Fund

Birth of Sabrina, granddaughter of Donna

& Howard Goldberg;

College graduation of Alana Miller,

daughter of Judi & Rabbi Jonathan Miller;

Engagement of Aaron Kline, son of Ricki

& Lanny Kline;

Marriage of Emily & Sammy Friedman;

Richard Marchase being named President
of FASEB

by Karen & Joel Piassick

to Karen & Joel Piassick Fund

Birth of Owen McMillan, grandson of

Judy & Gary Monheit;

Birth of Jane Zedd, granddaughter of

Helene Elkus

by Faye & Robert Levin

to Levin Family Fund

Birth of Sophie and Ian Lerner, great-

grandchildren of Betty Loeb

by Barbara & Larry Fine

to Barbara & Larry Fine Fund

by Carole & Michael Pizitz

to Carole & Michael Pizitz Fund

Birth of Jared, grandson of Karen & Joel

Piassick;

Charles Collat, Sr. receiving the Lifetime

Achievement Award from Birmingham

Business Journal;

Fran Godchaux receiving Woman of

Distinction Award from Girl Scouts

by Amy & Michael Saag

to Patterson Fund

Birth of Benjamin Bresler, son of Miriam

Sokol

by Carole & Michael Pizitz

to Carole & Michael Pizitz Fund

by Amy & Michael Saag

to Patterson Fund

Birth of Celia Madelyn, granddaughter of

Laurie Max;

Marriage of Leah, daughter of Brenda &

Fred Friedman, to Jeremy Cohen;

Marriage of Adam, son of Eve & Rick

Hirsch, to Marina Falls;

New home of Eve & Rick Hirsch

by Carole & Michael Pizitz

to Carole & Michael Pizitz Fund

Marriage of David, son of Ann & Paul Rich

by Barbara & Larry Fine

to Barbara & Larry Fine Fund

by Carole & Michael Pizitz

to Carole & Michael Pizitz Fund

Marriage of Jeff Rotenstreich, son of Judy

& Jimmy Rotenstreich

by Joan & Jack Becker

to Becker Family Fund

by Carol & Donald Herman

to Carol & Donald Herman Fund

by Letty & Bob Marcus

to Letty & Bob Marcus Fund

by Marilyn & Murray Tanner

to Hannah & Hyman Goldstein Fund

Special Birthday of Bunny Rotenstreich

by Amy & Michael Saag

to Patterson Fund

by Jean & Jerry Sklar

to Jean & Jerry Sklar Fund

Temple Contributions

TEMPLE GENERAL FUND

In Memory Of:

Andy Abroms

by Louise & Jim Abroms

by Joyce Helzberg

Helen Biedinger

by Susan & Karl Biedinger

Brennon Frank

by Auden Grumet

by Dr. & Mrs. Ross Grumet

by Priscilla Hecht Grumet

Hal Fredericks & Ida Grossman

by Blanche Fredericks

Lynne Alexander & Murray Gold

by Stand Gold

Ida Grossman

by Blanche Fredericks

Lewis Maxwell Hecht & Helen Miller Hecht

by Auden Grumet

by Dr. & Mrs. Ross Grumet

by Priscilla Hecht Grumet

Jeannie Huff

by Auden Grumet

by Dr. & Mrs. Ross Grumet

by Priscilla Hecht Grumet

Morton B. Kong

by Barbara Kong

Marjorie W. Margolin

by Barbara Kong

Helen Nagrodzki & Szymon Nagrodzki

by Louise & Jim Abroms

Rebecca Rashley

by Amy Trammell

Irving Rubel

by Mae Rosenberger

Evelyn Warner Silerstein

by Beth & Lawrence Warner

Bob Stebbins

by Auden Grumet

by Dr. & Mrs. Ross Grumet

by Priscilla Hecht Grumet

Faye Wise

by Auden Grumet

by Dr. & Mrs. Ross Grumet

by Priscilla Hecht Grumet

Ernie Willcher

by Louise & Jim Abroms

In Honor Of:

Bat Mitzvah of Amy Garber

by Nancy & Doug Lewis

Bar Mitzvah of Seth Perlman

by Nancy & Doug Lewis

by Barbara Kong

Special Wedding Anniversary of Cissy & Leonard Held

by Gloria & Gerald Silber

RABBI JONATHAN MILLER DISCRETIONARY FUND

In Memory of:

Bob Engel

by Paul & May Sternberg

Dr. Nathan Lewis

by Gloria Solomon

Dr. Allen Koslin

by Ricky Koslin

Ike May

by Rebecca May

In Honor Of:

Bar Mitzvah of Jake Fleisher

by Keith & Tammy Fleisher

Wedding of Jennifer Cohen to Ari

Feldman

by Betty Goldstein

In appreciation of all the hospitality offered by friends of Scott & Amy Garber in honor of Allie Garber's Bat Mitzvah

by Marilyn Garber

Donation:

by Alfred & Linda Cohn

by the Jack Dorsky family

by Sadye Lewis

by Bob & Letty Marcus

by Denny Marcus

by Ruth Rosenblum

by Julie Welden

CANTOR JESSICA ROSKIN DISCRETIONARY FUND

In Memory of:

Dr. Allen Koslin

by Ricky Koslin

Irving Rubel

by Ellen Dorsky

In Honor Of:

Bat Mitzvah of Jenna Becker

by Joan & Jack Becker

Bat Mitzvah of Allie Garber

by Amy Scott Garber

Bar Mitzvah of Jake Fleisher

by Tammy & Keith Fleisher

Wishing Good Health To:

Irv Siegal

by Ingrid & Howard Roskin

Donation:

by Arthur Press

RABBI SCOTT HAUSMAN-WEISS DISCRETIONARY FUND

In Memory Of:

Adele Goldstein

by Barbara & David Betten

Irving Rubel

by Barbara & David Betten

In Honor Of:

Bar Mitzvah of Jake Fleisher

by Tammy & Keith Fleisher

Wedding of Jennifer Cohen to Ari Feldman

by Dr. Gloria Solomon

Donation:

by Andy & Jenifer Rotenstreich

CARING COMMITTEE FUND

In Memory Of:

Essie Kirks

by Sandra & Ronald Vinik

SEWING GUILD

In Memory Of:

Rita Russ Speer

by Jan & David Fox

TECHNOLOGY FUND

In Honor Of:

Special Birthday of Frances Roseman

by Caroline, Courtney, Jeremy Brynes

by Ashley & Gavin Roseman

by Barbara & Donald Roseman

EDUCATION FUND

In Honor Of:

Special Birthday of Nancy Meisler

by Debbie & Mark Barstein

OUR SPONSORS

THIS SPACE IS AVAILABLE

Call LPi at
1.800.477.4574
for more
information.



BAR & BAT MITZVAHS, WEDDINGS,
CORPORATE & SOCIAL EVENTS

CALL JOY OR BRENDA
(404) 257-0206

www.vibeentertainmentinc.com

THIS SPACE IS AVAILABLE

**PAPER WORKS
OUTLET**

Invitations
Party Balloons
Gift Wrap Supplies

**3700 1st Ave., N.
(205) 324-2117**



Irene Ekstra

Assistant Manager/Buyer/Designer
Certified Sales Associate/American GEM Society

BROMBERG & CO., INC.

2800 Cahaba Road • Birmingham, AL 35223

Phone: (205) 871-3276

Fax: (205) 802-4586 • iekstra@brombergs.com



Volvo - Lexus - Toyota - Infiniti
Sales & Service

- Great products backed by excellent service
- Quality previously owned vehicles for you and your family
- Proud recipients of Motor Age Magazine's 2007 National Top Shop Award!

Michael R. Humphries, Sales Manager

www.franklinautomotive.com
2880 Acton Rd • Birmingham
(205) 969-2886 • Mobile (205) 903-0332
Fax (205) 380-2897
mhumphries@franklinautomotive.com

**GET IN TOUCH WITH YOUR
COMMUNITY!**



Call LPi at **1-800-477-4574** to Find out
How You Can Advertise Your Business.

**JOHN RIDOUT'S FUNERAL PARLORS
& CREMATION SERVICES**

2116 University Boulevard
Birmingham, Alabama 35233

(205) 251-5254

Points Grill 5pointsgrill.com

Ryan M. Weiss
Financial Advisor

**sterne
agee** Investments since 1901

800 Shades Creek Parkway • Suite 705
Birmingham, AL 35209 • 205.949.3528
rweiss@sterneagee.com



Sterne, Agee & Leach, Ins. is Member NYSE/FINRA/SIPC. Sterne Agee is the trade name used by all affiliates of Sterne Agee Group, Inc. including Sterne Agee Investment Advisors, Inc.

**TIME TO
ADVERTISE?**

If you feel your
business needs a little
more attention,
give LPi a call at...
1-800-477-4574



THIS SPACE IS AVAILABLE

Call LPi at
1.800.477.4574
for more
information.



For Advertising Information, call
DAWN LOYACANO at LPi today!

800.477.4574 • 216.643.4000 ext. 286



Liturgical Publications Inc
Connecting Your Community™

FOR ADVERTISING INFORMATION CALL

(800) 477-4574 or
(216) 643-4000

Charles R. Tourney
Vice President & General Manager



Memorials of Marble, Granite & Bronze
Mausoleums
Plaques & Letters For Buildings
Commercial Sandblasting & Signage

308 6th Avenue, S.W. • Birmingham
Toll Free: 800-239-8310 • Res.: 988-0862
Office: 328-8310 • Fax: (205) 328-0404

Elmwood

Cemetery and
Funeral Home



600 Martin Luther King Jr. Dr.
Birmingham, Alabama 35211

205-251-3114

*Serving the
Birmingham Community
for Over 100 Years*

No Obligation Consultations on
Pre-Arranged Burial Property and
Pre-Arranged Funerals

THIS SPACE IS
AVAILABLE

Support Our Advertisers

Check the ads on this page before you
check the yellow pages.

What Better Way to Spread the Word!

Hundreds of thousands of businesses nation-wide use newsletters to obtain new customers and reinforce existing relationships with their current customers. It is a proven, cost-effective method of advertising that gets noticed by a loyal community-based audience. Every month members religiously read these materials, and most hold onto them until the following issue is distributed. Advertising in these publications lets you reach desirable customers in your business area. What's more, it delivers a very positive impression about your business.

We create, produce, and print the ad, all within your specific advertising budget. Since 1972, Liturgical Publications has been at the forefront of communications advertising, currently serving 80,000 businesses on over 2,500 publications. These publications are read by more than 6 million people weekly. We want to make your experience with us both simple and effective. Which is why we'll not only create your ad, we'll also change it up to four times a year, absolutely free. It's one more way we exceed your advertising expectations.



Liturgical Publications Inc
Connecting Your Community™

**SPREAD THE GOOD WORD
ABOUT YOUR BUSINESS.**

For more information on this powerful method of advertising, call:

**Dawn Loyacano ext. 286
at LPi today.**

1-800-477-4574 or 216-643-4000

Temple Emanu-El
2100 Highland Avenue
Birmingham, AL 35205

Postmaster: Time Sensitive Material.
Please deliver immediately.

Address Service Requested

Are you moving? Do we have your correct address?
Please let us know by e-mail: marianne@ourtemple.org

NONPROFIT ORG.

U.S. POSTAGE

PAID

Birmingham, AL
Permit No. 1137

This issue of OurTemple bulletin is made possible through the generous support of the Rabbi Grafman Endowment Fund.

Brotherhood presents a:

Men's Health Program

Sunday, November 23

11:00a.m.-Noon

Temple Emanu-El

Join Brotherhood for a discussion about men's health issues that are on your mind. This is a chance for men to ask health questions to a panel of Temple member doctors:

Dr. Mike Honan

(cardiologist),

Dr. Mark Elkus

(orthopedic surgeon) and

Dr. Jim Abrams (internist).



Admission and light refreshments are free. Please RSVP by Nov. 18 to Justin Cohen at 266-0444 or by e-mail at jpc74@yahoo.com. If you have a question you want to submit anonymously, e-mail it to Justin, and it will be read at the event.

OurTemple

The Monthly Bulletin for Temple Emanu-El

Founded in 1882 and affiliated with the Union for Reform Judaism.

www.ourtemple.org

205/933-8037 FAX 205/933-8099

Clergy

Jonathan A. Miller.....Rabbi
Jessica Roskin.....Cantor
Scott Hausman-Weiss.....Rabbi/Director, Cong. Education & Outreach

Senior Staff

Lee Conn.....Executive Director
Cathy Moore.....Director, Early Childhood Ed.
Dina Glass.....Program & Event Coordinator
Jann Blitz.....Endowment Fund Executive Director

The Board of Directors

Lynne Cohen.....President
Mackie Horowitz.....First Vice President
Charlie Collat.....Vice President
Helene Elkus.....Vice President
Adam Gordon.....Vice President
Ginger Held.....Secretary
Jason Epstein.....Treasurer
Jeffrey Bayer.....Immediate Past President
David Aarons.....Julie Levinson-Gabis
Jack Aland.....Julie Marcus
Jack Becker.....Allen Meisler
Robin Berger.....Joel Piassick
Charles Bloom.....Kim Roth
David Brandt.....Jason Ruha
Linda Cohn.....Jon Solomon
Dian Diamond.....Ben Weil
Carol Gross.....Debbie Wiatrak
Randi Landy

In the event of a family emergency after hours, please contact us:

Rabbi Jonathan Miller, 223-0916

Cantor Jessica Roskin, 266-6549

Rabbi Scott Hausman-Weiss, 612-7824

Our mission: Temple Emanu-El is a welcoming Reform Jewish congregation, engaging members in prayer, study, fellowship and acts of loving kindness to our congregational family and the community at-large.

WHO DO I CALL...? at Temple Emanu-El regarding:

QUESTIONS ABOUT:

ANSWERS:

Issues with staff, building issues, cemetery, parking, bathrooms, garage, honorariums on the Tree of Life, Temple Board issues, website, webcast,	Lee Conn 933-8037 x238
appointment scheduling for clergy, Yahrzeits, adult education, Jr. Congregation, Shabbat Services, hospital visits from clergy, Mi'shebeirach list, deaths, births, namings, marriages, Birmingham Community Chorale, Channukah lunch, Brotherhood, Shabbat Programs Bar Mitzvah training, greeters	Dina Hagler 933-8037 x230
Film series, Sunday/Religious School, BIRTY, Teens, Hebrew School	Hillary Weiss 933-8037 x285
technology, phone system, alarm system, video system, elevators, physical plant issues	Geof Drew 933-8037 x287
scheduling events, facility rental, volunteering, First Fridays, social activities, childcare, Onegs, Bar Mitzvah planning, wedding planning, security	Dina Glass 933-8037 x244
Bulletin, eLetter, Directory, new members, donation acknowledgments, tzedukah box, schedules Temple meeting rooms, updating personal information,	Marianne Porterfield 933-8037 x239
Bookkeeping, dues, contributions	Michael Collins 933-8037 x235
Grafman Endowment, Project Shofar, establish a named fund, Annual Endowment Gift Program, bequests	Jann Blitz 933-8037 x234
Gift shop volunteers, gift shop information, gift shop hours, bulb shop questions	Loretta Newfield 933-8037 x0
Gift shop volunteers, gift shop information, gift shop hours	Mandy Solomon 933-8037 x214
Endowment donations, memorial plaques, Yom Kippur Memorial Book	Barbara Zaslofsky 933-8037 x233
Set up, help with incoming items	Debra McLain Melvin White 933-8037 x211
Volunteers, call and write ill congregants, deliver gift bags to newborns and senior congregants, deliver plants to grieving families, cook meals for congregants	Caring Committee Julie Levinson-Gabis
Birmingham Hospitality Network, sign up to gift wrap,	Social Action Linda Cohn 967-6356
Temple Greeters	Carol Gross 298-7552
donations of art to Temple, gifts honoring special occasions, interiors issues	Helene Elkus 870-8164
Library, book donations, donations to Library Fund	Barbara Capper 967-0439
Jewish food festival March 6 bakers, cooks, deliveries, tickets, pre-order, kitchen help, "day of" workers, PR for event	Food Fair Marilyn Tanner 967-4950 Sherron Goldstein 967-6106
Issues with ritual/worship services	Mackie Horowitz 969-1111
Sisterhood questions	Kim Roth 733-1723
Brotherhood questions	Jon Solomon 425-5113

Temple Emanu-El Executive Board and Committees

The Chair of each Committee reports to his/her designated Executive Board member.

The following is a list of those assignments:

Lynne Cohen, President

324-5677 (H); 585-7233 (C); 326-2415 (F)

Jeffrey Bayer, Immediate Past President - Nominations

795-4116 (W); 967-1354 (H)

Mackie Horowitz, 969-1111 (H) 1st Vice President

Membership, Ritual, Personnel, Jacobs Camp

Adam Gordon, 991-3714 (H) Vice President

Leadership Development, Social Action, Cemetery, House Committee, Temple Greeters, Bimah Honors

Charlie Collat, 967-3521 (H) Vice President

Dues, Building Upkeep, Youth and Education, Library

Helene Elkus, 870-8164 (H) Vice President

Facilities Usage, Communications, Interiors, Archives

Ginger Held, 967-7976 (H) Secretary

Fund Development, Caring, Seniors, Temple Tables 2008, Food Fair 2009, FRDC

Jason Epstein, 870-9549 (C) Treasurer

Budget, Technology, Investment, Financial Oversight

Kim Roth, 733-1723 (H), Temple Sisterhood

Jon Solomon, 425-5113 (H), Temple Brotherhood

Joel Rotenstreich, 967-5717 (H), Temple Emanu-El Rabbi Gratman Endowment Fund

Linda Verin – 967-0530 (H), Peace Birmingham

Emily and Sam Friedman – (H), BIRTY Advisors

**TEMPLE EMANU-EL FOOD FAIR
MARCH 8, 2009**

**WE NEED YOU!!!!!!!
SIGN UP NOW!**

Name _____

E-mail _____

Phone # _____

I would like to:

cook _____ **(days available)**

bake _____

set-up _____

put out signs in the community _____ **(2 weeks out)**

work on Saturday _____

work on Sunday _____

*I am unable to work but would like to make a contribution .
Please make checks payable to TEE Food Fair.
Your participation will help make this event a
SUCCESS.*

Thanks, Marilyn Tanner and Sherron Goldstein

Temple Emanu-El Events Calendar

205-933-8037

NOVEMBER 2008 CHESHVAN - KISLEV 5769

SUNDAY	MONDAY	TUESDAY	WEDNESDAY	THURSDAY	FRIDAY	SATURDAY
	<i>Our Tzedakah Box Charity for the month is: Kitchens of Alabama</i>					1 Torah Portion: <i>Noach</i> 9:00am Torah Study 10:30am Shabbat Service Children welcome, no childcare provided
2 9:30am Religious School 10:00am 3rd Grade Art	3	4 12:00pm Reconfirmation	5 3:30pm Hebrew School 5:45pm TEENS - Hands On 4 / Confirmation Session 7 7:15pm Birmingham Jewish Chorale	6	7 5:00pm Welcoming Oneg for Renee & Bernie Schulman 5:45pm Simchat Shabbat Service Guest speaker Rep. Artur Davis childcare provided	8 Torah Portion: <i>Lech L'cha</i> 9:00am Torah Study 10:30am Shabbat Service Adult Bat Mitzvah of Lisa Fishman Children welcome, no childcare provided
9 9:30am Religious School 10:00am 2nd Grade Parent/ Child Workshop	10	11 Temple Tots Closed for Veteran's Day 12:00pm Reconfirmation 5:30pm Temple Board Meeting	12 3:30pm Hebrew School 5:45pm TEENS - Hot Topics / Confirmation Session 8 6:00pm Sisterhood Board Meeting 7:15pm Birmingham Jewish Chorale	13	14 5:45pm High School Musical Family Shabbat Service 5:45pm UPB Shabbat Service Children welcome, no childcare provided Guest speaker Rev. Stephen Jones with dinner afterwards	15 Torah Portion: <i>Vayeira</i> 9:00am Torah Study 10:30am Shabbat Service Bat Mitzvah of Hannah Diamond childcare provided
16 9:30am Religious School 10:00am 6th Grade B'nai Parents Meeting	17	18 12:00pm Reconfirmation	19 3:30pm Hebrew School 5:45pm TEENS - Hands On 5 / Confirmation Session 9 7:15pm Birmingham Jewish Chorale	20	21 5:45pm Teacher Shabbat Service Children welcome, no childcare provided	22 Torah Portion: <i>Chayei Sarah</i> 9:00am Torah Study 9:30 Tot Shabbat "Alabama vs. Auburn" 10:30am Shabbat Service Children welcome, no childcare provided
23 9:30am Religious School 11:00am Brotherhood "Men's Health Program"	24	25 12:00pm Reconfirmation	26 NO Hebrew School or TEENS	27 Thanksgiving Temple offices & Temple Tots Closed 12:00pm Community Thanksgiving Service	28 Thanksgiving Holiday Temple offices & Temple Tots Closed 5:45pm Spiritual Fitness Shabbat Service Children welcome, no childcare provided	29 Torah Portion: <i>Toldot</i> 9:00am Torah Study 10:30am Shabbat Service Children welcome, no childcare provided
30 NO Religious School						