

# Our Temple



THE MONTHLY BULLETIN FOR TEMPLE EMANU-EL

*Celebrating 125 years of Reform Judaism!*

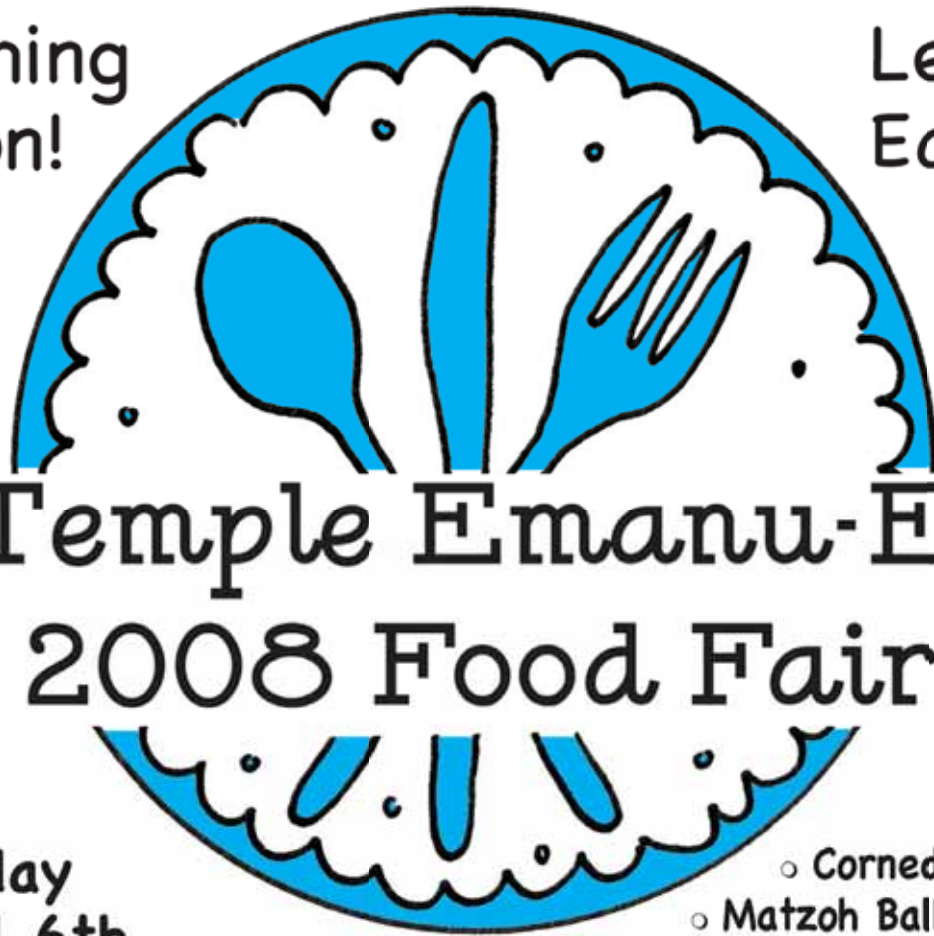
205/933-8037

Birmingham, Alabama

March 2008, Adar I/II 5768

Coming  
Soon!

Let's  
Eat!



## Temple Emanu-El 2008 Food Fair

**Sunday**  
**April 6th**  
**10:30 a.m. - 7 p.m.**  
**Temple Emanu-El**

- o Corned Beef
- o Matzoh Ball Soup
- o Beef Brisket
- o Fresh-Baked Desserts  
and much more!

Check inside for the Pre-order flyer (Passover soup and brisket) and for ways you can help with the Food Fair, even if you do not have much time!

### INSIDE OUR TEMPLE:

Our Services Calendar.....	2
Our Activities .....	3
Our Youth & Education .....	5

Our Members.....	6
Our Yahrzeits.....	10
Our Contributions .....	11
Our Sponsors .....	14

## OUR SERVICES

### MARCH SHABBAT SERVICES

**FRIDAY, 2/29**

5:00p.m. - Weil Hall and Hess Chapel

**Tot Shabbat "Jewish League"**

5:45p.m. - Sanctuary

**Shabbat Service**

(childcare provided)

**SATURDAY, 3/1**

11:00a.m. - Sanctuary

**Shabbat Service**

**Bat Mitzvah of Sara Ladden**

(childcare provided)

**Torah Portion:**

Vayakhel

**FRIDAY, 3/7**

5:45p.m. - Hess Chapel

**Rockin' Shabbes: Made**

**Especially for Families**

**"The Shabbat Life of Zack**

**& Cody"**

5:45p.m. - Sanctuary

**Contemporary Shabbat**

**Service**

(children welcome, no

childcare provided)

**SATURDAY, 3/8**

11:00a.m. - Hess Chapel

**Shabbat Service**

**Bar Mitzvah of Alexander**

**Oser**

(childcare provided)

**Torah Portion:**

P'kude

Please note: Beginning **April 5, 2008**, our Saturday morning Shabbat services will begin at **10:30a.m.**

**FRIDAY, 3/14**

5:45p.m. - Sanctuary

**UPB Shabbat Service**

(childcare provided)

**SATURDAY, 3/15**

11:00a.m. - Sanctuary

**Shabbat Service**

**Bat Mitzvah of Emma Rose**

**Egli**

(childcare provided)

**Torah Portion:**

Vayikrah / Zachev

**FRIDAY, 3/21**

5:45p.m. - Hess Chapel

**Shabbat Service**

(children welcome,

no childcare provided)

**SATURDAY, 3/22**

11:00a.m. - Hess Chapel

**Shabbat Service**

(children welcome,

no childcare provided)

**Torah Portion:**

Tzav

**FRIDAY, 3/28**

5:45p.m. - Sanctuary

**Shabbat Service**

**Wedding Blessing for Sam**

**Friedman and Emily Drell**

6:00p.m. - Atrium, Hess

Chapel, and Weil Hall

**Spiritual Fitness Shabbat**

**(see below left for details)**

(childcare provided)

**SATURDAY, 3/29**

9:30a.m. - Weil Hall and

Hess Chapel

**Tot Shabbat "Finding**

**Gefilte"**

11:00a.m. - Sanctuary

**Shabbat Service**

(children welcome, no

childcare provided)

**Torah Portion:**

Shimini / Parah

### SPIRITUAL FITNESS

**A SHABBAT (spiritual) WORKOUT FOR YOUNG ADULTS  
JOIN US FOR A FINE TUNING OF  
OUR HEADS and OUR HEARTS**

**Friday Night, March 28**

6:00-6:30p.m., **The Warm Up** - Wine, Beer and Hors D'oeuvres (Kid Drinks and Hors D'oeuvres too!) in the atrium of the Collat Congregational Center.

6:30-7:30 p.m., **The Cardio Workout** - Heart Pumping Music, Meditation and Learning led by Rabbi Scott and Michael Levine in Hess Chapel.

**Kids Need a Workout Too!** Children 6 and younger are welcome to participate in fun Shabbat activities led by some of our best teachers!

7:30-9:00p.m., **The Cool Down** - Delicious Shabbat dinner, delightful conversation and no dieting in Weil Hall.

Please RSVP by April 11th to Dina Glass at 933-8037 ext. 230 or by email at [dglass@ourtemple.org](mailto:dglass@ourtemple.org)

*Due to the fact that this program is a winner of Union for Reform Judaism National Outreach Award, the cost for the evening, including dinner, is being covered by the monetary award. So, there is no cost to participate.*



### FIRST SUNDAYS FILM SERIES CONTINUES

*Films begin at 9:30a.m. in Abroms Hall in the Collat Congregational Center later with discussion led by Rabbi Scott Hausman-Weiss. The First Sundays Film Series is made possible by the generosity of the Michael and Amy Saag family.*

**March 2: The Harmonists.** Filled with top-flight performances and unforgettable music, this entertaining and critically-acclaimed story was cheered by audiences everywhere. When Harry, a struggling but highly imaginative funnyman, forms a singing group with an unusual group of friends, the "Harmonists" go on to become an overnight sensation in pre-war Germany. But as their wave of success inevitably collides with the nation's changing political tide, the group's members are forced to face unprecedented challenges that will try their wills and test their loyalty!

**March 30: Monsieur Batignole.** Summer 1942, France is under German occupation. Edmond, a butcher whose future son-in-law is an active collaborator, inadvertently takes part in the deportation of his Jewish neighbor's family. When the neighbor's son, Simon, shows up on what used to be his doorstep, he finds that Edmond and his family are now living there. Feeling guilty and seeking to avoid trouble with the German authorities, Edmond hides the boy who is soon joined by his two little cousins, also orphaned by the war. As it becomes increasingly difficult for him to hide the kids from his family, Edmond finds himself getting more and more attached to them. Risking it all, he decides to help them cross the Swiss border, but that's where his troubles really begin.



**Message from Rabbi Miller:**

My friends,

It seems that my bulletin messages over these past months keep revolving around a similar theme—staying connected at Temple Emanu-El. Our lives are so busy, so busy, and so many things pull at us always. So how can we work to stay connected at the Temple and with each other?

More and more, we rely on the Internet to stay in touch. Full time, permanent webcasts will begin in the next few months. We will broadcast live every Shabbat service, concert and adult education program that takes place in our Sanctuary or the Hess Chapel. All you have to do is click on to [www.ourtemple.org](http://www.ourtemple.org) with a high-speed connection, and the experience of being at the Temple can enter your home or office through the Internet.

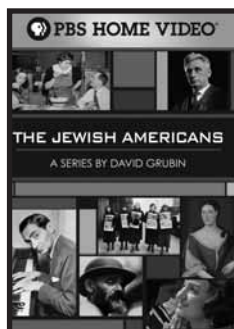
Stop and imagine what a blessing this can be to our elderly, shut-ins, college kids, families with children, or those out of town or stuck in the office. You can be with us and experience the music, the messages, and the learning that Temple Emanu-El offers. I am so grateful to Linda and Alfred Cohn and Patsy and Charles Collat for enabling us to webcast our services. They are such wonderful friends of all of us. Spread the word about our webcast, and stay connected at Temple Emanu-El.

See you at Temple,

Rabbi Jonathan Miller

**Did you miss *The Jewish Americans*?**

*The Jewish Americans* series, a documentary about Jewish life in the United States, ran on Alabama Public Television in January. If you missed any of this series, don't worry! The Engel Library at Temple Emanu-El has acquired *The Jewish Americans* on DVD, available for check-out, free-of-charge.



Along with this series, check out other items in our DVD Library:

**Documentaries:** *Schmelvis, Paper Clips, Shalom Y'all, Anne Frank Remembered, A History of God*

**Kids:** *Shalom Sesame, Esther: The Girl Who Became Queen, Chanuka & Passover at Bubbe's*

**Feature Films:** *The Prince of Egypt, Schindler's List, Joseph: King of Dreams, Escape from Sobibor*

Stop by to see what we've got, or donate a favorite Jewish-related DVD to the library. As of this publication date, we are happy to say that two additional copies of *The Jewish Americans* on DVD have been donated in honor of Ruth and Marvin Engel's special anniversary, and prior to the airing of the series in January, we also received an autographed copy of the book. Many thanks to all of our donors.

**Temple Emanu-El Food Fair,  
Sunday, April 6**

**Here are some ways you can help with Temple Emanu-El's Food Fair even if you have virtually no time:**

- ☆ Put up a yard sign at your home or a large sign or poster at your place of business promoting the Food Fair. Please e-mail Sandy Jacobs at [sjacobs2@bham.rr.com](mailto:sjacobs2@bham.rr.com) for signs and posters.
- ☆ At every community organization meeting you attend in March, make an announcement or ask the head of the organization -- Kiwanis, Rotary, PTA, etc. -- promoting our Food Fair. You can use the information on the front cover of this bulletin. Then e-mail Joel Goldstein at [Joel\\_Goldstein@ml.com](mailto:Joel_Goldstein@ml.com) to let him know what organizations you are covering.
- ☆ Do your kids need service hours? Have them help with the Food Fair. Please e-mail Alison Berman at [alisonberman@charter.net](mailto:alisonberman@charter.net) or Marilyn Tanner at [tannerm@bellsouth.net](mailto:tannerm@bellsouth.net).
- ☆ Do you have just a few hours to help Sunday, April 6th or Monday, April 7th? Please e-mail Alison Berman at [alisonberman@charter.net](mailto:alisonberman@charter.net) or Marilyn Tanner at [tannerm@bellsouth.net](mailto:tannerm@bellsouth.net).

**Thanks! Hundreds have answered the call;  
we just need you to guarantee success!**

## OUR ACTIVITIES

# Temple Tots

## Mommy & Me

Temple Tots offers a fun-filled program for Mom, Dad or caregiver and their little ones! Please join us every Thursday for singing, creative movement, and other activities designed to stimulate your child's natural curiosity and imagination!!!

**Ages:** 6 months-18 months  
**When:** Every Thursday, 9:15-10:00am  
**Cost:** There is NO fee for this program!



"One generation plants the trees; another gets the shade."  
--Chinese Proverb

Please contact Stephanie Sklar at [templetots@ourtemple.org](mailto:templetots@ourtemple.org) or 933-8037, ext 227 for more information about Temple Tots, Mommy & Me, or any of the incredible programs we offer for our precious children.

## Peetluk Softball Tournament returns this May

Calling all men softball players ages 18 to 98!! It's time to start preparing for the **6th Annual Bill Peetluk Lag b'Omer Softball Invitational Tournament**. Once again, we are set for a one-day single elimination softball tournament commemorating Lag b'Omer involving the Birmingham synagogues, Chabad and Mesch AZA.

The date is Sunday, May 4 at the LJCC (rain date is Sunday, May 18th). Our coach (who once again, led us on to victory last year) is Glenn Fleisig.

Email him at [GlennF@ASMI.org](mailto:GlennF@ASMI.org), or Bill Goldman at [bgold240@aol.com](mailto:bgold240@aol.com), and tell them you want to be a part of the Temple Emanu-El Championship team as we do a threeppeat of last year's win. We are asking each participant and spectator to pay \$5.00 at each session as a fundraiser for the Mesch AZA/ Magic City BBG Peetluk Scholarship Fund. The Fund's purpose is to provide scholarships and assistance for AZA and BBG teens to participate in Jewish programs, Israel trips, youth group conventions and other youth activities.

Bill Peetluk was a tireless worker for AZA and for Kneseth Israel, both of which he loved. He left us too early at

the age of 45 a few years ago, and this is the community's way of memorializing him and honoring his terrific family.

This is always a fun event for participants of every skill level. Everyone who comes out gets to play and show off for their family. The big winners are the kids, so everyone sign up and enjoy a day at the ballpark.

The tournament schedule is:

**GAME 1 - 9:30 a.m.**

Temple Beth-El vs. Kneseth Israel/Chabad team

**GAME 2 - 10:50 a.m.**

Temple Emanu-El vs. Mesch/AZA

**CHAMPIONSHIP - 5:30 p.m.**

Game 1 winner vs. Game 2 winner

**Temple Traditions Gift Shop**  
Visit our website at [www.ourtemple.org](http://www.ourtemple.org) and click under 'Support Our Temple/ Gift Shop'

Temple Traditions is a gift shop run by the Sisterhood of Temple Emanu-El. Our hours of operation are:

**Tuesday 10:00a.m. - 2:00p.m.**

**Wednesday 10:00a.m. - 2:00 p.m. and 3:30-5:30p.m.**

**Thursday 10:00a.m. - 2:00p.m.**

**Friday 10:00a.m. - 2:00p.m.**

**Sunday 9:30a.m. - 12:00p.m.**

*That being said, we are having difficulty finding people to work in the gift shop. If anyone is interested in helping out during any of these hours, please call Loretta at 933-8037 ext. 214. As a bonus, if you work 5 or more hours, you receive a 15% discount on your purchases. Please consider giving of your time -- it would be greatly appreciated.*

**From the Desk of Rabbi Scott**

**Purim is coming! Purim is coming!**

I know it seems like the present-giving holiday, Chanukah, has come and gone, but in actuality, it's Purim that is the real Jewish holiday of gift-giving.



Nowhere in the Chanukah story or Talmudic rules about the lighting of Chanukah candles is mentioned how many gifts one should give one's kids per night. But, for lots of reasons not to be delineated here, we do it anyway. And boy, what fun it is to see our kids faces light up at the sight of eight nights worth of gifts!

But it's Purim, however, that is the holiday that commands us to give gifts – two kinds. *Matanot l'evyonim* – gifts for those in need and *Sh'lach manot* – sending gifts to family and friends. These two, in addition to the other two mitzvot of Purim, Hearing the Megillah and Making a Purim Feast, are what Purim is all about. We celebrate yet another "against all odds tale of Jewish survival" with song, story and don't forget, presents.

So, parents, I guess what I am telling you is, don't let Purim go by without making special gifts to give to friends, making special donations to a worthy cause and maybe a little something for the kids. Here's an idea- that toy or game that they are asking for now – tell them that because Esther instructed the Jewish people to give gifts in order to celebrate a well earned victory over Haman, so too will you give them for Purim, the toy or game that they are asking for as long as they are victorious over their inclination to misbehave! How's that for a parallel to their lives that may also incentivize their behavior!

Rabbi Scott Hausman-Weiss

**Rockin' Family Shabbat**  
Friday, March 7 at 5:45p.m.

**The Shabbat Life of Zack & Cody**

located in Hess Chapel

Mark your calendars!

<p style="text-align: center; font-weight: bold;">March 2</p> <p><b>Religious School</b> 9:30a.m.-12:00p.m.</p>	<p style="text-align: center; font-weight: bold;">March 5</p> <p><b>Hebrew School</b> 3:30-5:30p.m. <b>NO TEENS</b></p>
<p style="text-align: center; font-weight: bold;">March 9</p> <div style="display: flex; justify-content: space-between;"> <div style="width: 60%;"> <p><b>Religious School</b> <b>Purim Carnival</b> 9:30a.m.-12:00p.m.</p> </div> <div style="width: 35%; text-align: center;"> </div> </div>	
<p style="text-align: center; font-weight: bold;">March 7-9</p> <p style="text-align: center;"><b>BIRTY</b> <b>Spring Conclave</b> (Memphis)</p>	<p style="text-align: center; font-weight: bold;">March 12</p> <p><b>Hebrew School</b> 3:30-5:30p.m. <b>TEENS</b> 5:45-7:30p.m. (Hands On)</p>
<p style="text-align: center; font-weight: bold;">March 16</p> <p style="text-align: center;"><b>NO RELIGIOUS SCHOOL</b></p>	<p style="text-align: center; font-weight: bold;">March 19</p> <p style="text-align: center;"><b>NO HEBREW SCHOOL</b> <b>NO TEENS</b></p>
<p style="text-align: center; font-weight: bold;">March 23</p> <p style="text-align: center;"><b>NO RELIGIOUS SCHOOL</b></p>	<p style="text-align: center; font-weight: bold;">March 26</p> <p><b>Hebrew School</b> 3:30-5:30p.m. <b>TEENS</b> 5:45-7:30p.m. (Hands On)</p>
<p style="text-align: center; font-weight: bold;">March 29</p> <p style="text-align: center;"><b>Tot Shabbat</b> <b>"Finding Gefilte"</b></p>	<p style="text-align: center; font-weight: bold;">March 30</p> <p><b>Religious School</b> 9:30a.m.-12:00p.m.</p>

## OUR MEMBERS

### Our Volunteer Spotlight: Sharon Cutter

Sharon Cutter first moved to Birmingham 31 years ago with her husband, Gary, who came to work for the School of Public Health at UAB as a biostatistician. Along with them came their small children, Corey, Scott and Todd. The family called Temple Emanu-El their spiritual home and were thrilled to go through three consecrations, three b'nai mitzvahs and three confirmations here.

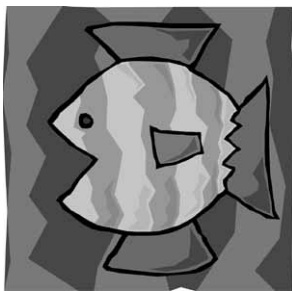
While in Birmingham, Sharon began her career as an aerobics instructor and personal trainer. Teaching and training women in fitness became her passion, and she called the LJCC and The Ladies' Club her second homes. She had the pleasure of teaching so many women about physical fitness and her career helped define her life. Seventeen years later the family relocated to Denver to be near the three children who were attending the University of Colorado -- Corey for law school and Scott and Todd for their undergraduate degrees. After a quick move back to Birmingham and then a very brief move to Reno, this empty nest couple happily moved back to Birmingham to continue living this new phase of their life among so many old friends and familiar faces. Unfortunately, Sharon had a freak encounter with a Pilates reformer and broke her arm. A plate and four pins later, she had to alter her career and slow down to about 108%. Her parents both passed away a few years ago.



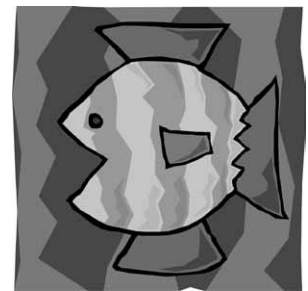
After watching her mom get such joy out of her volunteer work, Sharon decided to do a little volunteer work of her own to find some of that joy and to do some "giving back" to the community that had been so wonderful to her and her family.

*"From the first time I was assigned to Marianne, I immediately felt comfortable. I did some computer work and as I walked out that first Thursday afternoon, I had such a sense of peace about me. Those feelings have only heightened since my first time at 'my job.' The Temple is such a source of comfort for me. As I am becoming more familiar with my routine, I am slowly getting a little more independent with what I have to do. I feel like my mom's spirit is with me, and only now do I truly understand that volunteering does so much more for me than the Temple. The staff are all wonderful and so willing to help when they see a perplexed look on my face. After only coming two times, I asked to volunteer another day per week. I feel so fortunate to have this opportunity to be able to give back, to see familiar faces all the time, I do feel blessed to have found another passion."*

When she isn't at Temple, she spends much of her time travelling to Costa Rica, where her two sons own a real estate company doing land sales and development and where she visits her three granddaughters, Maya, Liana and Mia. The joys of being a grandmother are certainly not overrated. Her daughter, Corey, is an attorney in Atlanta, and the whole family feels blessed to have such a wonderful relationship. Her life is good!!!!!!



## Temple Emanu-El presents "Finding Gefilte!"



Saturday, March 29  
9:30a.m. in Weil Hall

#### Includes:

- ☆ Bagel Nosh
- ☆ Tot Shabbat Service
- ☆ Arts & Crafts with the Kids
- ☆ Adult Text Study with  
Rabbi Scott Hausman-Weiss

RSVP to Dina Glass at  
[dglass@ourtemple.org](mailto:dglass@ourtemple.org) or 933-8037, ext. 244.

## Sisterhood is "In Bloom" this Spring!!

Have you noticed the gorgeous Spring Bulbs blossoming all over town? Did you know that many of those fabulous blooms come from bulbs sold by your very own Sisterhood?

Have you heard that the annual Bulb Sale is very important and allows Sisterhood to fund important programs such as **Temple Tots, Precious Legacy and Religious School Scholarships?**

That is why March is the perfect time to Kick-Off the 2008 Sisterhood Bulb Sale!

The Kick-Off begins at our **General Meeting on March 26th, at 7:00p.m.** We will celebrate Spring with a special Sisterhood program: *"All You Ever Wanted to Know about Bulbs, But Didn't Know Who to Ask."*

Bring your questions about planting, soil and sun conditions, watering, etc., and Libby Rich, owner of the Plant Odyssey, will be there to give advice. We would love to see your garden photos, so please bring them to share. Refreshments will be served. Please RSVP to Wendy Martin at 592-9531 by March 24.



### SISTERHOOD GIVES THANKS

While we are talking about bulbs, we want to again thank all our wonderful members and supporters who worked so hard to make the 2007 Bulb Sale a great success!

As we gear up for our 2008 Bulb Sale, please consider joining our team of salespeople or volunteers in our "shop" to help spread the beauty of bulbs. We need many hands to make this a success. Remember...the rewards are not all in the garden...our Temple programming and congregation receive the benefits of our success!

### PROGRAM SPEAKER

Sisterhood extends a warm thank you to **Steve Chiotakis** for coming to speak to our group in January (and for being so flexible in rescheduling!). The evening was enjoyed by all in attendance and it was a treat to meet the person behind the voice on the radio. Thank you Steve!

### SISTERHOOD SHABBAT VOLUNTEERS

A BIG thank you to *Sissy Toronto, Valerie Thompson, Lori Weil, Alisa Nadler, Dina Glass, and Cantor Jessica Roskin* for making our service, dinner and seder so memorable for all in attendance. The service was so meaningful including the participation of our Sisterhood Past Presidents and current Board. The meal was delicious and the seder was a special occasion for learning led by Cantor Roskin. Thank you to all for making it so special!

### PRECIOUS LEGACY HELPERS

We would like to thank all those who provided ingredients and helped with the mailing to make those bags a real treat.

Many thanks to *Marie Goldfarb (she made a fabulous bag of cookies and personalized each one), Cathy Moore, April Robertson-Thompson, Lynn Rathmell, Julie Levinson-Gabis, Wendy Martin, Loretta Newfield and Kim Roth.*

### SISTERHOOD HOSTS SHABBAT DINNER, Friday, April 11

**SAVE THE DATE!** Relax and enjoy a delicious dinner immediately following 5:45p.m. Shabbat Services. Adults will be served in Abroms Hall, while children enjoy their own dinner and movie. Supervised children's activities will be sponsored by Sisterhood and will be crowd-pleasers for the 12-and-under set.

The cost is \$13 for adults, \$6 for children. Please RSVP to Dina Glass at 933-8037, ext. 244 or [dglass@ourtemple.org](mailto:dglass@ourtemple.org) by Tuesday, April 8.

As a fun highlight for the night, please send us pictures of your gardens in bloom (these can be this year or a prior year) by April 1, and we'll put them together in a slide show for everyone to enjoy during dinner.

**Hope to see you there!**

### *répondez s'il vous plaît ...*

...or RSVP as we commonly view this four-letter word. But what does it really mean? According to *American Heritage Abbreviation Dictionary 3rd Edition*, this French abbreviation means, "respond if you please, a response is expected."

In the two years now that I have been honored to be Temple's Program & Event Coordinator, these special four little letters have come to mean a lot to me. How many people will we be able to plan on? How many table decorations will I need? How many tables will we need to set up? How many custodial staff do we need for the event? How many napkins? How many Cornish hens do I purchase? How much food to prepare or order? Wow! All of these questions can be answered with 4 little letters?!?!?! Yes!

So, I know as you are reading this (which I hope you are) you are thinking to yourself: why is she writing about letters that we all recognize and understand? Well, I am asking for your help. I am asking everyone to help every event and dinner in a significant way by RSVP'ing by the date we list in the bulletins and e-letters. I know sometimes we may forget, and sometimes we procrastinate, but if we all try to "respond as expected," we will continue to improve upon our ever-improving dinners and events.

My door, phone and computer are always open to suggestions and comments. I know that I cannot please everyone all the time but all that is "me" sure does want to, all the time. I do want to share some improvements we are currently working on:

- ✧ Approved and tried menus from various establishments.
- ✧ Dinner & a movie childcare during some Temple dinners.
- ✧ Our own Temple tablecloths!
- ✧ Providing children with food when services go longer than expected.
- ✧ Service with a smile!

*Bon appetit*, and I expect to see you all at our next event!

**Dina Glass**

## OUR MEMBERS

### Mazel Tov to...

**Ron and Avie Cohen** whose daughter, Jennifer Cohen, recently announced her engagement to Ari Feldman of New York City. They will be married in June 2008 in New York City.

**Dr. Deborah Majeau Chargois** on being selected to Marquis Publication's Who's Who in America 2008 for her research on sonic booms and their effect on public health.

Ryan & Marci Gotlieb on the birth of their son, Joshua Bradley Gotlieb, December 28. Congratulations to the entire family, including big sister Alexis and grandparents **Raymond & Rosalie Gotlieb**.

**Lincoln & Nancy Berland** on their son **Matthew Berland's** engagement to Leema Kuhn. They will be married on June 8 in Chicago.

**Judy Ladden** on her recent marriage to Randal Lewis McDonald on December 21.

Stephen and Michelle Frohsin of Nashville, TN on the birth of their twin daughters, Patricia Rose and Hannah Carolyn on January 8. Grandparents are **Henry and Carolyn Frohsin**, uncle is **Dr. Hank Frohsin, Jr.**, and great-grandfather is Harry Markstein.

### Honorable Menschens...

Loretta Newfield, Lori Weil, Bob Marcus, Lynne Cohen, Fred Kanter, Carlotta Dorn, Joan Becker, Milton Datnoff, Ilene Rosenfeld-Johnson, Ina Russakoff, Carol Gross, Sherron Goldstein, Marilyn Tanner, Sharon Cutter, Faye Levin, Kim Roth, Mackie Horowitz, Julie Marcus, Barbara Capper, Alison Berman, David Reese, April Robertson-Thompson, Sherron Goldstein, Irvin Siegal, Marvin Engel, David Cohen, Elizabeth Roseman, Kevin Wiatrak, Debbie Wiatrak, Alisa Nadler, Patti Hirsberg, Karen Wheeler, Alison Weil, Darlene Winston, Teri Aizenman, Sharon Mclaughlin, Jessica Frehling-Kazzie and Howard Schultz.

#### Each month, Temple Emanu-El chooses a specific cause for our Tzedakah Box. Our March charity is **BIRMINGHAM HOSPITALITY NETWORK (BHN)**.

*BHN strives to help families in need. As one of two organizations in Birmingham that serves homeless families as a unit, BHN is a community non-profit organization with a mission to rescue homeless families. Not only are food and shelter offered, but BHN also helps in developing a stable lifestyle.*

*Each Network congregation furnishes overnight lodging and meals each night for a week for up to 14 people at a time. Typically, a congregation rotates hosting a week at a time every three months. Our Network program fosters increased awareness of the problems of homelessness and serves as a catalyst to develop other initiatives for the homeless.*

## B'nei Mitzvah

**Alex Oser**  
March 8

Alex will be celebrating with his parents, Rachel and Allen Oser and his sister, Gabi. Attending this simcha will be his grandparents, Naomi & Ed Fineberg and Rhoda & David Oser, along with many extended family members and friends. His great grandmother, Sylvia Fineberg, will fly in from Connecticut for the service.



**Emma Rose Egli**  
March 15

"Emmy" is the daughter of Bari Cotton and Peter Egli, granddaughter of Phoebe Cotton and also Leah Egli of Switzerland. Celebrating with Emmy is her brother Dany, and relatives from Switzerland, including Mirjam, Jasmin and Judith Egli (first cousins) and Maya & Alex Wessner (aunt & uncle).



ברוך ה'בא

**We would like to welcome the following new member to our Temple family:**

**Lori Nelson**

514 Boulder Lake Way (35242)  
968-3029

*Lori and her family have moved to Birmingham recently from Raleigh, NC. Her husband, Jeff, works for S.E. Toyota, and they get relocated periodically. They have two sweet girls, Jessica (11) and Samantha (6), and they live in Liberty Park. Lori's passions are working out and taking care of her kids.*



### Caring Committee: “Faye Levin, Our Leader”

The Caring Committee for Temple Emanu-El runs seamlessly with Faye Levin at its helm. She takes care of a myriad of details, including recruiting volunteers, planning cooking days so we can deliver soup to ill congregants, arranging, assembling, and delivering holiday baskets to our seniors, making sure plants are delivered to the bereaved, lining up people to make calls and visit congregants and much, much more -- never with a complaint and never asking or even wanting any credit for her hard work.

Faye grew up in Alexander City, attended the University of Florida for undergraduate work and received her MBA in accounting from Emory. She met her husband, Dr. Robert Levin, in Atlanta where he was doing his residency. They returned to Birmingham where Robert’s father, grandfather and great grandparents were all members of Temple Emanu-El. The Levins have three terrific sons. Gary and Andrew now live in New York and, the youngest, Matthew, is a senior at the University of Pennsylvania.

Faye has served the Birmingham community in so many important volunteer positions -- as President of the PTA for both Mtn. Brook Elementary and Mtn. Brook High School, as Treasurer of the Junior League, and now as Treasurer of the Temple Endowment Fund and as a member of the Temple Board. Robert has served as Temple President. We are so lucky to have the Levins as part of our Temple family.

Remember that Temple Emanu-El Caring Committee wants to care for you... so please let us know if you or someone you know needs a little TLC. When congregants are ill, the caring committee would like to send them a note and/or some soup. Please contact Dina (DH) Hagler, [dh@ourtemple.org](mailto:dh@ourtemple.org), 933.8037 x230, or Faye Levin, [flevin@bellsouth.net](mailto:flevin@bellsouth.net), 871.1290 with the information. If you would like to volunteer on the Caring Committee, please contact Faye.

Join us on Sunday morning, April 13th from 10:00 - 11:30 am at Five Points Grill for a very special brunch.

Rabbi Scott and Gerry Nemet, Temple Emanu-El congregant and owner of the Five Points Grill (just around the corner from Temple Emanu-El) invite you to join us for a deliciously satisfying Passover prep! Cost will be \$12 for brunch.



- ✧ Enjoy an excellent brunch, including a few Kosher-for-Passover breakfast items you can try at home (recipes to be provided).
- ✧ Partake in an engaging overview of the real meaning of Passover.
- ✧ Take away five central points that will make your seder more enjoyable.
- ✧ Take away five central texts that will make your seder more inspiring.
- ✧ Take away five central ways to enjoy a Kosher-for-Passover week.

### TELL YOUR CIVIL RIGHTS ERA STORIES and EXPERIENCES

Alabama Contemporary Theater is a new nonprofit theater company in Birmingham. The founding artistic director, Jamie



Lawrence, has a vision to create a community play based on the Civil Rights era of Birmingham.

As many of you well know Temple Emanu-El and its members were an important part of this history that needs to be heard. We would like to interview you and hear your personal and collective stories regarding this era. A stage play and a documentary will be culled from the various interviews. Dr. Huntley and Laura Caldwell of The Birmingham Civil Rights Institute’s Oral History Project are looking forward to incorporating these interviews into their archives upon completion of our projects. If you know individuals who do not belong to the temple yet have their own stories, we would like to interview them as well. If you choose to remain anonymous in the interview, we will respect that choice.

Executive Director of ACT is Sally Smith, a member of Temple Emanu-El. She is a documentary filmmaker who participated in the events that took place at First Baptist and The Baptist Church of the Covenant during the 1960’s -1978. To schedule an interview, please contact Sally at (205) 601-2298 or [sallypatriciasmith@yahoo.com](mailto:sallypatriciasmith@yahoo.com). We look forward to hearing your stories.

---

# OUR YAHRZEITS

---

## March Yahrzeits

---

*May the beauty of their lives shine forever, and may we always bring honor to their memory.*

### **February 29 – March 1**

Mathew Altschuler  
Harry Bernow  
Sara F. Cohen  
Sylvia Cooley  
Minnie B. Cooper  
Isadore M. Davis  
Ike Z. Engel  
Nathan Epsman  
Ben F. Ezekiel  
Joan Newmann Fantl  
Ed Malcolm Friend  
Freida Glickman  
Sarah Meyerson Goldman  
Sam Hamerman  
Fannie Hanover  
Wolf Izen  
Rose Kaufman  
Abe S. Krawcheck  
Shirley Liberman  
Rose Litwin  
Abe London  
Joseph H. Loveman  
Minnie Weil Loveman  
Samuel William Lyon  
Paul M. Overall  
Morris Rosenblum  
Bernard Rosenbush, Jr.  
Florence Silverberg  
Rosalyn Lurie Weil  
Estelle Weinberger  
William J. Wilson  
Ida Tenenbaum Zavelo

### **March 7-8**

Ralph Aland  
Herbert J. Baum  
Abraham Bresler  
Rose Waxman Bresler  
Herbert Cain  
Isaac E. Capilouto  
Bessie G. Cooley  
Simon Denaburg  
Neliah Einstein  
Morris Feldman  
Rita Fleisher  
Alex Friedman  
Frank Friedman  
Evelyn Vessier Geismar  
Mae Goldberg  
Albert Goldman  
Nathan Goldstein  
Hyman Goldstein  
Edward Goldstone  
Robert Scott Gordon

Herman Gotlieb  
Victor M. Hanan  
Frummie Dorfman Harris  
Michael Hirsch  
Jacqueline Jaspan  
Mary Karnofsky  
George Katz  
Jack Kohara  
Nathan Kraselsky  
Isaac (Ike) Kronenberg  
Carrie Lazarus  
Rebecca Malkove Leader  
Ida Leland  
Jacob M. Levine, Sr.  
Sally Loveman  
Dora B. Mack  
Duke Marlowe  
Barbara Wertheimer Marx  
Beatrice L. Mazer  
Jeanette Mendel  
Leopold Mendel  
David Mitnick  
Julie Weintraub Moore  
Harry Moore  
Lena W. Myer  
Lucille Oster  
Abraham I. Perley  
Annie Rippis  
Sol Rittenbaum  
Annie Rittenbaum  
Rose Mayberger Roobin  
Joseph D. Rosenberger, Sr.  
Joseph Sachs  
Sidney Sigman  
Louis Silberman  
Harvey D. Spielholz  
Burghard Steiner  
Edward Wald  
Rose Zavelo Weil  
Oscar Weinstein  
Sara Weinstein  
Annabelle L. Weinstein  
Sol Zalmon  
Goldie Ziff  
Nathan Zinderman

### **March 14-15**

Bernice Aland  
Gene Baim  
Simon Blach  
Ida Eisenberg Bornstein  
Samuel Bornstein  
Louis Bresler  
Reva Bry  
Dan Coblentz

Samuel Cohn  
Helen Ruth Damsker  
Ceil Echt  
John Eisenberg  
William Epstein  
Lena Feidelson  
George Feldman  
Celia Wasserman Gamburg  
Dave Goldberg  
Minnie Goldner  
Malvin Goldstein  
Lillian Goldstein  
Helene Heller  
Henry Heller  
Joseph Hirsch  
Minna S. Holzer  
Roman Huzik  
Jacob Kaufman  
Clara Kaufman  
Robert Kernan  
Flora Klotman  
Jacob Klotman  
Tessa Levenson  
Harry R. Licht  
Elizabeth Mancin  
Lill Ostand  
Alan H. Pines  
Linda Gotlieb Pliner  
Walter Rosenbaum  
Edward G. Rosenfeld  
Ida Rosenthal  
Irving Russell  
Tobey Saffris  
Edward Schoen  
Bernice K. Schulwolf  
Jerry K Seton  
Samuel A. Shapiro  
Rose Simkin  
Lawrence Simpson  
Mikhail Sorkin  
William Sorokin  
Freida Spivak  
Myer Staff  
Anna Bloch Stamler  
Julius Stein  
Mimi Swid  
Jackie Thomas  
Leo Wald  
Marcus Weil  
Isadore T. Weill  
Lesley Hirsch Whitson  
Florence Wolf

### **March 21 – 22**

Virginia Bridgewater  
Mary Champion  
Aline R. Chapman  
Louis Clein  
Arnold Cogan  
Thelma Cook  
Lucille Zeldin Cotton  
Robert Harold Dyer-Smith  
Olga Dyer-Smith  
Jessie E. Eastis  
Irving Eisenberg  
Calman T. Estrach  
Mimi Fiordalisi  
Louis Fox  
Jonathan B. Freedman  
Esther Robin Goldblatt  
Lawrence Goldman  
Samuel Goldstein  
Pinya Golger  
Ruthie Gornek  
Irving Zulie Harris  
Sam Hartman  
Jean Hartselle  
Edwin J Hiller, Jr.  
Fannye E. Kahn  
Libby Katz  
Matthew Kernan  
Harry Kolber  
Sidney Kronenberg  
Mollie Levin  
Louis Litvak  
Charles Monheit  
Samuel Norwich  
Celia Millstein Oppenheim  
Jerome H. Oppenheimer  
Isadore Pizitz  
Hattie Reese  
Abe Rich  
Robert Myer (Teddy)  
Roobin  
Blanche E. Rosenberg  
Clara Rowan  
Emma Hellman Schoen  
Benjamin Schultz  
Julius Silverberg  
Harry Meyer Speigelman  
Max Stern, Jr.  
Henry J. Swedlaw  
Maurice Tenenbaum  
Helene Mannheimer  
Tuholske  
Samuel Ullman  
Bettie Urdong  
Sam Vitemb

Jeanette Weinberg  
Charles Weisberg  
Mayer Weiss  
Martha Kaufman Wolf  
Joseph M. Wortsman, Sr.

### **March 28-29**

Mitzi Jaffe Aarons  
Gerry Allon  
Dorothy Beck  
Vladimir Belotserkovskiy  
Vellye Berman  
Alice Wilzin Blach  
Richard Bransdorf  
Blanche Brasch  
Molly Brody  
Bessie Coblentz  
Hector Curiel  
Jane Klein Glick  
Richard Goldner  
Emelia Goldsmith  
Seymour S Green  
Milton D Jacobson  
Sara Friedman Klaffer  
Bernard H. Kronenberg  
Howard C. Largeman  
Chris Lewis  
Pearl Wald Marcuse  
Beverly Marks  
Sam Marks  
Elaine Markstein  
Lauren Korman Moran  
Sara Newberger  
Mose Newberger  
Anna Eisenberg Odrezin  
Pearl H. Perling  
David Petrofsky  
Lena Phillips  
Sylvia Raflo  
Lewis Rittenbaum  
Mary Wittenstein Roth  
Sol Sacks  
Rose Seton  
Bertha B. Shapiro  
S. A. Shapiro  
Max Sokol  
Adria Speilberger  
Stella Baer Strauss  
Adolph B. Weil  
Arthur Weinberg  
Max Weinstein  
Murray A. Weinstein  
Marian E. Wertheimer  
Adelade Wilkoff  
Abraham Zaslofsky

---

## Condolences to...

**Bunny (Joel) Rotenstreich** and the entire family on the death of her brother, Justin "Chuck" Ravitz, of Detroit, MI, on Wednesday, December 26. His wife is Berna Ravitz.

## OUR CONTRIBUTIONS

We appreciate the thoughtfulness of those who support Temple Emanu-El, including our Campaign and Endowment Fund, by remembering and honoring their friends and loved ones through their generous contributions. Thank you for the following gifts received through January 23, 2008.

### ENDOWMENT FUND CONTRIBUTIONS

#### GENERAL ENDOWMENT FUND

##### In Memory Of:

Dina Berk

*by Gail & Charles Herman*

Scott Bernstein

*by Betty & Max Steinmetz*

Marcia Cohen

*by Roz Bloomston*

*by Adele Goldstein*

*by Barbara & Harvey Gotlieb*

Mitchell Cotton

*by Howard Schultz*

Janet Dorsky

*by Cathy & Paul Friedman, Jr.*

Marvin Elkin

*by Regina Capilouto*

*by Nancy & David Denney*

*by Cissy & Leonard Held*

*by Doris & Fred Kanter*

*by Blanche Rogoff*

Ethel Fitlow, Nathan Fitlow and Chase Van Baalen

*by Ida Van Baalen*

Cathy H. Friedman

*by Roz Bloomston*

*by Mary Lynne & Eli Capilouto*

*by Adele Goldstein*

*by Barbara & Harvey Gotlieb*

Evelyn Gotlieb

*by Richard Gotlieb*

Maxine Lapidus, Bernice Marx and Shirley Newman

*by Adele Goldstein*

Leah Marks

*by Cathy & Paul Friedman, Jr.*

Chuck Ravitz

*by Bernice Barstein*

*by Roz Bloomston*

*by Cheryl & Charlie Collat, Jr.*

*by Helene Elkus*

*by Janis & Paul Friedman, Sr.*

*by Cathy & Paul Friedman, Jr.*

*by Cissy & Leonard Held*

*by Gail & Charles Herman*

*by Doris & Fred Kanter*

*by Blanche Rogoff*

*by Lucy & Buddy Schulhafer*

Sandra Sokol

*by Roz Bloomston*

*by Cheryl & Charlie Collat, Jr.*

*by Ethel Fleisher*

*by Janis & Paul Friedman, Sr.*

*by Cathy & Paul Friedman, Jr.*

*by Adele Goldstein*

*by Cissy & Leonard Held*

*by Gail & Charles Herman*

*by Lill & Jerry Lapidus*

*by Betty & Robert Loeb*

*by Bety & Max Steinmetz*

*by Linda Verin & Rick Clay*

Elma Rowe Tate

*by Lois & David Cohen*

##### Wishing Good Health To:

Henry Aizenman and Lynn Kraselsky

*by Betty & Max Steinmetz*

Ellen Aland, Mitzi Goldstein and Mollie

Gotlieb

*by Adele Goldstein*

Frances Cypress and Bunny Rotenstreich

*by Barbara & Harvey Gotlieb*

Gladys Epstein

*by Blanche Rogoff*

*by Howard Schultz*

Sherm Horowitz, Sandra Russell and Bobbie

Siegal

*by Linda Verin & Rick Clay*

Allen Koslin

*by Bernice Barstein*

*by Barbara & Harvey Gotlieb*

Loretta Newfield

*by Barbara & Harvey Gotlieb*

*by Carol & Bob Gross*

*by Doris & Fred Kanter*

*by Blanche Rogoff*

Carol Reese

*by Adele Goldstein*

*by Doris & Fred Kanter*

##### In Honor Of:

Anniversary of Gladys & Alex Epstein

*by Barbara & Harvey Gotlieb*

Birth of Drew Jordan, grandson on Julie &

Harold Ceitlin

*by Gail & Charles Herman*

Birth of Lila, daughter of Julie & Scott Fleisig;

Birth of Natalie Clair, granddaughter of Janet &

Leonard Wertheimer III

*by Adele Goldstein*

Marriage of Judy Borisky & Robert Metzger

*by Betty & Max Steinmetz*

Ricki Kline receiving the Volunteer in

Philanthropy Award by YWCA

*by Gail & Charles Herman*

Special birthday of Bob Berman

*by Adele Goldstein*

Special birthday of Arnold Cotton

*by Cathy & Paul Friedman, Jr.*

Special birthday of Betty Goldstein

*by Bernice Barstein*

*by Betty & Robert Loeb*

Special birthdays of Rachel Rosenthal and Anne

Silberman

*by Lucy & Buddy Schulhafer*

##### Memorial Plaques:

Evelyn Sellers Blum – November 13, 2007

Roger Nathan Blum – September 16, 2007

*the children of Roger & Evelyn Blum*

#### AARONS FAMILY FUND

##### In Memory Of:

Chuck Ravitz and Sandra Sokol

*by Janet & David Aarons*

#### BARBARA ABRAMS & JULIAN ALAND SCHOLARSHIP FUND

##### In Memory Of:

Chuck Ravitz and Sandra Sokol

*by Judy Todd & Ted Abrams*

#### MUNCY HARRIS ABROMS ADULT EDUCATION FUND

##### In Memory Of:

Dina Berk, Chuck Ravitz and Sandra Sokol

*by Carol Solomon*

#### GAIL & JEFFREY BAYER FUND FOR RELIGIOUS EDUCATION

##### In Memory Of:

Chuck Ravitz

*by Gail & Jeffrey Bayer*

##### In Honor Of:

Special birthday of Hal Abroms

*by Gail & Jeffrey Bayer*

#### BECKER FAMILY FUND

##### In Memory Of:

Sandra Sokol

*by Joan & Jack Becker*

#### BLACH FAMILY FUND

##### In Honor Of:

Special birthday of Charles Collat, Sr.

*by Nancy & Harold Blach, Jr.*

#### FRANCES & CONRAD CYPRESS FAMILY FUND

##### Wishing Good Health To:

Gladys Epstein and Loretta Newfield

*by Frances Cypress*

##### In Honor Of:

Birth of great grandchild of Shirley & Julius  
Goldstein

*by Frances Cypress*

#### BARBARA & LARRY FINE FUND

##### In Memory Of:

Marcia Cohen and Sandra Sokol

*by Barbara & Larry Fine*

#### HANNAH & HYMAN GOLDSTEIN VOLUNTEER FUND

##### In Memory Of:

Dina Berk

*by Marilyn & Murray Tanner*

Hannah Goldstein, Chuck Ravitz and Sandra  
Sokol

*by Marilyn & Murray Tanner*

*by Debra & Joel Goldstein*

Fanny Silverstein

*by Debra & Joel Goldstein*

##### Wishing Good Health To:

Gladys Epstein and Allen Koslin

*by Marilyn & Murray Tanner*

## OUR CONTRIBUTIONS

### SHERRON & ALLAN GOLDSTEIN FUND

#### In Memory Of:

Marvin Elkin, Cathy Friedman, Chuck Ravitz and Sandra Sokol

*by Sherron & Allan Goldstein*

#### Wishing Good Health To:

Sherm Horowitz

*by Sherron & Allan Goldstein*

#### In Honor Of:

Birth of Lila Sophie, granddaughter of Cathy & Paul Friedman, Jr.;

Birth of Jonah, grandson of Ronne & Donald Hess;

Birth of Natalie Clair, granddaughter of Janet & Leonard Wertheimer III;

Jann Blitz receiving the Volunteer in

Philanthropy Award;

Special birthday of Leni Epstein

*by Sherron & Allan Goldstein*

### BETTY ALLENBERG GOLDSTEIN FUND

#### In Memory Of:

Chuck Ravitz

*by Betty Allenberg Goldstein*

### ROSALIE & RAYMOND GOTLIEB FUND

#### In Memory Of:

Dina Berk, Belle Gotlieb, Bernice Marx and Sandra Sokol

*by Rosalie & Raymond Gotlieb*

#### Wishing Good Health To:

Mollie Gotlieb

*by Rosalie & Raymond Gotlieb*

#### In Honor Of:

Special birthday of Rachel Rosenthal

*by Rosalie & Raymond Gotlieb*

### EVELYN & JACK HELD FUND

#### In Memory Of:

Chuck Ravitz and Sandra Sokol

*by Evelyn & Jack Held*

### CAROL & DONALD HERMAN FAMILY FUND

#### In Memory Of:

Sandra Sokol and Ronnie Westbrook

*by Carol & Donald Herman*

#### Wishing Good Health To:

Gladys Epstein

*by Carol & Donald Herman*

### HESS CHAPEL FUND

#### In Memory Of:

Carl Hess, JoAnn Hess Morrison and Sidney Seidenman

*by Jimmie Hess*

### CAROL & MICHAEL PIZITZ FAMILY FUND

#### In Memory Of:

Cathy H. Friedman, Bernard Greenberg, Chuck Ravitz and Sandra Sokol

*by Carol & Michael Pizitz*

### GAYLE & EDDIE LEITMAN FUND

#### In Memory Of:

Chuck Ravitz

*by Gayle & Eddie Leitman*

### FAYE & ROBERT LEVIN FAMILY FUND

#### In Memory Of:

Jan Bozeman and Chuck Ravitz

*by Faye & Robert Levin*

#### In Honor Of:

Birth of Ellis & Lawson Sokol, grandchildren of Barbara Sokol

*by Faye & Robert Levin*

### LEVITT FAMILY FUND

#### In Honor Of:

Special birthday of Ronald Levitt

*by Lisa & Alan Engel*

### LETTY & BOB MARCUS FUND

#### In Memory Of:

Marvin Elkin, Leah Marks, Chuck Ravitz and Sandra Sokol

*by Letty & Bob Marcus*

#### In Honor Of:

Special birthdays of Betty Goldstein and

Rachel Rosenthal

*by Letty & Bob Marcus*

### MAYER ULLMAN NEWFIELD FUND

#### In Memory Of:

Melvin Dorn, Sr.

*by Carlotta Dorn*

### RABBI MORRIS NEWFIELD FUND

#### In Memory Of:

Chuck Ravitz

*by Janet & Morton Goldfarb*

### DIANA & SIDNEY PATTERSON FUND

#### In Memory Of:

Marvin Elkin

*by Pat Weil*

Chuck Ravitz

*by Lori & Jim Weil*

*by Pat Weil*

Sandra Sokol

*by Lori & Jim Weil*

#### Wishing Good Health To:

Gladys Epstein

*by Pat Weil*

### KAREN & JOEL PIASSICK FUND

#### In Memory Of:

Jan Bozeman, Chuck Ravitz and Sandra Sokol

*by Karen & Joel Piassick*

### BUNNY & JOEL ROTENSTREICH FAMILY FUND

#### In Memory Of:

Chuck Ravitz

*by Marissa & Harold Apolinsky*

*by Marvin & Ruth Engel*

*by Mackie & Sherm Horowitz*

*by Sam Tenenbaum, Jr.*

Dina Berk

*by Sam Tenenbaum, Jr.*

## OUR SPECIAL THANKS

The Rabbi Grafman Endowment Fund is pleased to announce that 25 new Named Funds have been established within the last six months, bringing our total number of Named Funds to 91. We gratefully acknowledge the generosity of the following families, all who will be added to our **Grafman Legacy Society**.

*Please take a moment to stop and look at the beautiful new hand-inscribed pages of our Grafman Recognition Book in the foyer of the 2nd floor. The book is opened to feature the names of all of our new funds created in 2006 and 2007.*

#### Unrestricted Funds:

Judy Todd Abrams & Ted Abrams Fund

Barbara & Jack Aland Family Fund

Gail & Harry Bayer Fund

Bluestein Family Fund

*by Jane & Joe Bluestein and*

*Kenneth & Karen Bluestein*

Rebecca & Adam Gordon Family Fund

Ginger & Jerry Held Fund

Evelyn & Jack Held Fund

Carol & Donald Herman Family Fund

Rochelle & Michael Koslin Family Fund

Gayle & Eddie Leitman Fund

Levitt Family Fund

*by Ronald Levitt*

Carol & Michael Pizitz Family Fund

Betsy & Peter Printz Fund

Judy & Jimmy Rotenstreich Fund

Russakoff Family Fund

*by Ina & David Rusakoff*

Stephanie & Brad Sklar Family Fund

Carleton & Bruce Sokol Fund

Weiner Family Fund

*by Diane & Mike Weiner*

Weinman/Fierman Family Fund

*by Chu-Chi & Bobby Fierman*

Wertheimer Family Fund

*by Janet & Leonard Wertheimer III*

#### Designated Purpose Funds:

Gail & Jeffrey Bayer Fund for

Religious Education

Rusty & Cathy Beth Fund for

Jews-by-Choice

Deborah Chargois Fund for

Dues Endowment

Faye & Norris Friedman Fund

Karen & Joel Piassick Fund

## OUR CONTRIBUTIONS

### ROSE & NATHAN ROTENSTREICH LEGACY FUND

#### In Memory Of:

Dina Berk and Sandra Sokol  
*by Judy & Jimmy Rotenstreich*

### CARLETON & BRUCE SOKOL FUND

#### In Memory Of:

Chuck Ravitz  
*by Carleton & Bruce Sokol*

### WEINMAN/FIERMAN FUND

#### In Memory Of:

Jan Bozeman, Chuck Ravitz, Sandra Sokol and  
Av Nell Wagner  
*by Chu-Chi & Bobby Fierman*

### JANET & LEONARD WERTHEIMER FAMILY FUND

#### In Memory Of:

Sandra Sokol  
*by Janet & Leonard Wertheimer III*

## TEMPLE CONTRIBUTIONS

### TEMPLE GENERAL FUND

#### In Memory Of:

Henry Biedinger  
*by Susan and Karl Biedinger*  
Evelyn and Roger Blum  
*by Glenn Malchow*  
Bernard M. Buxbaum  
*by Shirley and Julius Goldstein*  
Bernard M. Capper  
*by Florence Eittinger*  
Larry Datnoff  
*by Joellen and Robert Cohen*  
Hymen Dorsky  
*by Ellen and Jack Dorsky*  
Marvin Elkin  
*by Susan and Karl Biedinger*  
Dr. Richard Elkus  
*by Beth and Lawrence Warner*  
Cathy H. Friedman  
*by Jane and K.B. Arendall*  
*by Julie Broday*  
*by Huner & Cyr, P.C.*  
*by Donna and David Kraselsky*  
*by Kay and Bob Lewis*  
*by Janet Roycroft*  
*by Margaret and Max Stern*  
Robert B. Garber  
*by Amy and Scott Garber*  
Edith K. Gerson  
*by Isabel G. Siegal*  
Arthur Goldstein  
*by Shirley and Julius Goldstein*  
Bernard G. Greenberg  
*by Julie Ann Marks*  
Abraham Isaac Odrezin  
*by Gregory Odrezin*

Chuck Ravitz

*by Leah and Ronald Leaf*  
*by Kay and Bob Lewis*

William Rich

*by Marie Rich*

Morris Rouso

*by Lindsay Levine and Lee Ascherman*

Rose Shugerman Davis

*by Dr. and Mrs. Melvin Davis*

Sandra Sokol

*by Bea and Victor Cohen*  
*by Nancy and Morton Dimenstien*  
*by Margot and Edgar Marx*  
*Nathan Solomon*  
*by Dr. and Mrs. Melvin Davis*

Nathan Solomon

*by Dr. and Mrs. Melvin Davis*

Isaak Vayntraub

*by Klavdia Belaya*

#### In Honor Of:

Judy and Hal Abrams

Gail and Harry Bayer

*By Susan Gray*

Dr. Robert May

*By Bess and William Coleman*

The Birth of Preston McClure

*by Amy Trammell*

The Conversion of Brian McMillan

*by Sandra Koplou*

#### In Appreciation Of:

Mary Anne Freeman

*by Amy Trammell*

Scott Godchaux

*by Amy Trammell*

Elissa and Jeff Mazer

*by Amy Trammell*

### RABBI JONATHAN MILLER DISCRETIONARY FUND

#### In Memory of:

Cathy H. Friedman

*by Delores and Edward Bloomston*  
*by Paul and Janis Friedman*

Leah Ellen Marks

*by Michael and Elinor Staff*

Sandra Sokol

*by Stanley S. Kahn*

#### In Honor Of:

16th Birthday of Michael Nathan

*by Dorothy Goldsmith Nathan*

Baby Naming of Hannah Brooker

*by Bradley and Stephanie Brooker*

Bat Mitzvah of Emily Cutler

*by Jeffrey and Susan Cutler*

Conversion of Son-in-Law Brian McMillan

*by Gary and Judy Monheit*

#### Donation:

*by Ada Long*  
*by Edward Schnee*

### CANTOR JESSICA ROSKIN DISCRETIONARY FUND

#### In Honor of:

Bat Mitzvah of Emily Cutler  
*by Jeffrey and Susan Cutler*

### RABBI SCOTT HAUSMAN-WEISS DISCRETIONARY FUND

#### In Memory of:

Leah Ellen Marks  
*by Michael and Elinor Staff*

#### In Honor of:

Bat Mitzvah of Emily Cutler  
*by Jeffrey and Susan Cutler*

Donation for the purpose of gifting of *The Jewish Baby Handbook, The Bride and Groom Handbook, and The Jewish Mourners Handbook*  
*by Sherman and Mackie Horowitz*

#### Donation

*by Alan R. Glazman*

### CAMP HENRY JACOBS FUND

#### In Honor of:

The Birthday of Betty Goldstein  
*by Marlin and David Feldman*  
*by Bobbie and Milt Miller*

### EDUCATION FUND

#### In Memory Of:

Janet Dorsky  
*by Barbara and Mark Goldstone*  
Leah Marks  
*by Toni and Aaron Rios*

### CHORALE FUND

#### In Honor of:

Mackie Horowitz  
*by Rabbi and Mrs. Irving Bloom*  
Special Birthday of Roz Siegal  
*by Dr. Gloria Solomon*  
Speedy Recovery of Bunny Rotenstreich  
*by Dr. Gloria Solomon*

#### In Memory Of:

Melvin L. Klafter  
Samuel E. Klafter  
*by Grace Finkel*

#### Wishing Good Health To:

Sherm Horowitz  
*by Susan and Karl Biedinger*  
*by Jamie and Greg Odrezin*

### TEMPLE EMANUEL SEWING FUND

#### In Memory of:

Dorothy Tenenbaum  
*by Ann and Richard Goldstein*

### ORGAN MAINTENANCE FUND

#### In Honor of:

Cantor Roskin  
*by Sherman and Mackie Horowitz*

**OUR SPONSORS**

*The Invitation Place, Inc.*

3150 Overton Road  
 Cahaba Heights, Alabama 35223  
 (205) 970-3970



BAR & BAT MITZVAHS, WEDDINGS,  
 CORPORATE & SOCIAL EVENTS  
 CALL JOY OR BRENDA  
 (404) 257-0206  
 www.vibeentertainmentinc.com

**GUARANTEE SYSTEM**

GUARANTEE CARPET CLEANING & DYE CO.  
 (205) 591-7200



Over 25 Years Experience  
 Cleaning and Dyeing  
 Wall-to-Wall Carpets  
 Oriental Rugs & Upholstery  
 DAVID KANTER  
 Manager

**PAPER WORKS  
 OUTLET**

Invitations  
 Party Balloons  
 Gift Wrap Supplies  
 3700 1st Ave., N.  
 (205) 324-2117

**THIS SPACE IS  
 AVAILABLE**

Call LPi at  
**1.800.477.4574**  
 for more  
 information.



Volvo - Lexus - Toyota - Infiniti  
 Sales & Service

- Great products backed by excellent service
- Quality previously owned vehicles for you and your family
- Proud recipients of Motor Age Magazine's 2007 National Top Shop Award!

Michael R. Humphries, Sales Manager  
 www.franklinautomotive.com  
 2880 Acton Rd • Birmingham  
 (205) 969-2886 • Mobile (205) 903-0332  
 Fax (205) 380-2897  
 mhumphries@franklinautomotive.com

**GET IN TOUCH WITH YOUR  
 COMMUNITY!**

Potential Customers Are Reading  
 This Publication Right Now!

Call LPi at **1-800-477-4574**  
 to Find out How You Can  
 Advertise Your Business.



**JOHN RIDOUT'S FUNERAL PARLORS  
 & CREMATION SERVICES**

2116 University Boulevard  
 Birmingham, Alabama 35233  
 (205) 251-5254

**BLOOM**

CREATIVE FLOWERS  
 FOR WEDDINGS, BAR/BAT MITZVAHS  
 2518 18th St. S. • Homewood  
**879-7673**



Liturgical Publications Inc  
 Connecting Your Community™

FOR ADVERTISING INFORMATION CALL

(800) 477-4574 or  
 (216) 643-4000



**TIME TO  
 ADVERTISE?**

If you feel your  
 business needs a little  
 more attention,  
*give LPi a call at...*  
**1-800-477-4574**

(205) 422-5745  
 www.abigailchaskin.net



ABIGAIL CHASKIN  
 Passionate About Your Success



4320 Eagle Point Parkway  
 Birmingham, AL 35242

**RITCH'S PHARMACY**

"A store of personal service"

Ralph E. Sorrell R.Ph. • Keith C. Conner, R.Ph.  
2714 Cahaba Rd. • Mountain Brook  
**271-1141**

Charles R. Tourney  
Vice President & General Manager



Memorials of Marble, Granite & Bronze  
Mausoleums  
Plaques & Letters For Buildings  
Commercial Sandblasting & Signage  
308 6th Avenue, S.W. • Birmingham  
Toll Free: 800-239-8310 • Res.: 988-0862  
Office: 328-8310 • Fax: (205) 328-0404

**Elmwood**

Cemetery and  
Funeral Home



600 Martin Luther King Jr. Dr.  
Birmingham, Alabama 35211

**205-251-3114**

*Serving the  
Birmingham Community  
for Over 100 Years*  
No Obligation Consultations on  
Pre-Arranged Burial Property and  
Pre-Arranged Funerals

THIS SPACE IS  
**AVAILABLE**



**Danny R. Glass**  
Certified Insured Pest Tech

**DanDee Pest Control**

Owners, Danny & Dina Glass

*Who can get rid of your pests? The DanDee man can!!*

5130 Gold Leaf Lane • Pinson, AL 35126

Phone: 205-616-2220 • Email: [glassfam3@bellsouth.net](mailto:glassfam3@bellsouth.net)

**What Better Way to Spread the Word!**

**H**undreds of thousands of businesses nation-wide use newsletters to obtain new customers and reinforce existing relationships with their current customers. It is a proven, cost-effective method of advertising that gets noticed by a loyal community-based audience. Every month members religiously read these materials, and most hold onto them until the following issue is distributed. Advertising in these publications lets you reach desirable customers in your business area. What's more, it delivers a very positive impression about your business.

We create, produce, and print the ad, all within your specific advertising budget. Since 1972, Liturgical Publications has been at the forefront of communications advertising, currently serving 80,000 businesses on over 2,500 publications. These publications are read by more than 6 million people weekly. We want to make your experience with us both simple and effective. Which is why we'll not only create your ad, we'll also change it up to four times a year, absolutely free. It's one more way we exceed your advertising expectations.

**SPREAD THE GOOD WORD ABOUT  
YOUR BUSINESS.**

For more information on this powerful method of advertising, call:



**Liturgical Publications Inc**  
Connecting Your Community™

**Ray Kelly ext. 243 at LPI today.  
1-800-477-4574 or 216-643-4000**

Temple Emanu-El  
2100 Highland Avenue  
Birmingham, AL 35205

Postmaster: Time Sensitive Material.  
Please deliver immediately.

Address Service Requested

NONPROFIT ORG.

U.S. POSTAGE

**PAID**

Birmingham, AL  
Permit No. 1137

*Are you moving? Do we have your correct address?*  
Please let us know by e-mail: [marianne@ourtemple.org](mailto:marianne@ourtemple.org)

**This issue of OurTemple bulletin is made possible through the generous support of the Rabbi Grafman Endowment Fund.**

# Pajama Purim!

**Once again, Temple Emanu-El and Temple Beth-El will be celebrating Purim together!**

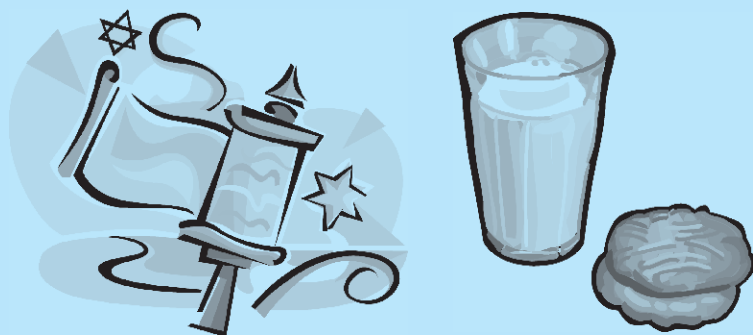


**Wear your PJs and join us at Temple Beth-El on Thursday, March 20**

**Maariv / Full Megillah Reading:  
5:30pm (Chapel)**

**Abridged Megillah Reading:  
6:30pm (Sanctuary)**

**Milk & Cookies Reception: 7:15pm**



## OurTemple

The Monthly Bulletin for Temple Emanu-El

Founded in 1882 and affiliated with the Union for Reform Judaism.  
[www.ourtemple.org](http://www.ourtemple.org)

205/933-8037 FAX 205/933-8099

### Clergy

Jonathan A. Miller.....Rabbi  
Jessica Roskin.....Cantor  
Scott Hausman-Weiss.....Rabbi/Outreach  
Director of Youth & Education

### Senior Staff

Lee Conn.....Executive Director  
Stephanie Sklar.....Director of Temple Tots  
Dina Glass.....Program & Event  
Coordinator  
Jann Blitz.....Endowment Fund  
Executive Director

### The Board of Directors

Lynne Cohen.....President  
Mackie Horowitz.....First Vice President  
Charlie Collat.....Vice President  
Helene Elkus.....Vice President  
Adam Gordon.....Vice President  
Ginger Held.....Secretary  
Glenn Fleisig.....Treasurer

Jack Becker  
Robin Berger  
Alison Berman  
Charles Bloom  
Linda Cohn  
Dian Diamond  
Jason Epstein  
Carol Gross  
Randi Landy  
Faye Levin

Julie Levinson-Gabis  
Ronald Levitt  
Julie Marcus  
Joel Piassick  
Kim Roth  
Jenifer Schniper-Thornton  
Jon Solomon  
Ben Weil  
Debbie Wiatrak

**In the event of a family emergency after hours, please contact us:**

**Rabbi Jonathan Miller, 223-0916**

**Cantor Jessica Roskin, 266-6549**

**Rabbi Scott Hausman-Weiss, 612-7824**

*Our mission: Temple Emanu-El is a welcoming Reform Jewish congregation, engaging members in prayer, study, fellowship, and acts of loving kindness to our congregational family and the community at-large.*