

Our Temple



THE MONTHLY BULLETIN FOR TEMPLE EMANU-EL

www.ourtemple.org

Celebrating 125 years of Reform Judaism!

205/933-8037

Birmingham, Alabama

October 2010, Tishrei/Cheshvan 5771

Join us for Shabbat services and dinner on Friday, October 22, for "Access to a Spiritual Life" with guest speaker

Rabbi Lynne F. Landsberg

Rabbi Lynne F. Landsberg is Senior Advisor on Disability Issues for the Religious Action Center of Reform Judaism.

Rabbi Landsberg is co-founder and co-chair of the **Jewish Disability Network** -- a coalition of national Jewish religious movements and organizations advocating for the civil and human rights of people with disabilities. She is also on the Steering Committee of the Interfaith Disability Advocacy Coalition.

Our evening will begin with a beautiful Shabbat service at 5:45p.m. at which Rabbi Landsberg will address us on a search for a spiritual life after becoming disabled.

Following services at about 6:45p.m., we will gather together for a delicious Shabbat meal as we continue our exploration of what it means to find wholeness in a world that too often sees the disabled as broken.



At our dinner, special guest speakers **Abraham Hausman-Weiss** (Temple Emanu-El 7th grader) and **Miles Thompson** (Head Coach, University of Alabama men's wheelchair basketball team) will share the stories of their journeys towards healing and wholeness.

Cost for dinner is \$15 per adult, \$7 per child 5-12, children 4 & under are free.

Please RSVP to Fran Marlow at events@ourtemple.org, gardner49@bellsouth.net, or 933-8037, ext 244.

INSIDE OUR TEMPLE:

Our Services	2
Our Clergy	3
Our Youth & Education	4

Our Members	5
Our Yahrzeits	9
Our Contributions	10
Our Sponsors	14

Please remember Temple's Endowment Fund in your estate plans, and let us know when you do this.

Our Services & Activities

October Shabbat Services

Friday, 10/1

5:00p.m.
Tot Shabbat
5:40p.m.
Kabbalat Shabbat
5:50p.m.
Candle-Lighting,
Simchat Shabbat Service
*Birthday Blessing for
October*
(children welcome,
no childcare provided)

Saturday, 10/2

10:30a.m.
Shabbat Service
*Bat Mitzvah of
Laine Meisler*
(childcare provided)

Torah Portion:
B'reishit

Friday, 10/8

5:40p.m.
Kabbalat Shabbat
5:50p.m.
Candle-Lighting,
Shabbat Service
(children welcome,
no childcare provided)

Saturday, 10/9

10:30a.m.
Shabbat Healing Service
(children welcome,
no childcare provided)

Torah Portion:
Noach

Friday, 10/15

5:40p.m.
Kabbalat Shabbat
5:50p.m.
Candle-Lighting,
Shabbat Service
*Anniversary Blessing for
October*
(children welcome,
no childcare provided)

Saturday, 10/16

10:30a.m.
Shabbat Service
(children welcome,
no childcare provided)

Torah Portion:
Lech L'cha

Friday, 10/22

5:40p.m.
Kabbalat Shabbat
5:50p.m.
Candle-Lighting,
Shabbat Service
*Special Guest:
Rabbi Lynne Landsberg*
6:45p.m.
Shabbat Dinner
(RSVP req'd; see front cover)
(children welcome,
no childcare provided)

Saturday, 10/23

10:30a.m.
Shabbat Service
*Bat Mitzvah of
Jessica Sirkin*
(childcare provided)

Torah Portion:
Vayeira

Friday, 10/29

5:40p.m.
Kabbalat Shabbat
5:50p.m.
Candle-Lighting,
Shabbat Service
(children welcome,
no childcare provided)

Saturday, 10/30

9:30a.m.
Tot Shabbat
10:30a.m.
Shabbat Service
(children welcome,
no childcare provided)

Torah Portion:
Chayei Sarah

All services are webcast at: www.ourtemple.org

Got Shabbat?

Yes!! & It's Gonna Be Great!

Our First Tot Shabbat Will Be Friday, October 1, 5:00p.m.

5:00p.m. Tot Shabbat Service, with a very cute play by our Temple Tot Players: the off, off, off Broadway Production of "Welcome Shabbat"

5:40p.m. Shabbat Dinner

6:20p.m. Children Activities/Parents Text Study With Rabbi Scott

7:00pm Good Night

Main course meal will be provided at NO cost to you. Desserts, drinks and side dishes are needed. Please RSVP to Cathy Moore at templetots@ourtemple.org or 933-5907 and let her know what you will be bringing by Friday, September 24.

Also please bring a white T-shirt for each family member labeled with your family's name. Amy Saab will be creating Got Shabbat? tie dyed T-Shirts that will be given back to you at our next Got Shabbat, Saturday, October 30th.

Save The Date

Got Shabbat ?

The Meshuggina Monsters מפלצות

+

Kosher Pumpkins

Saturday, October 30
9:30a.m.

Dress up as your favorite
Jewish Halloween
Monster



USPS Identification Statement

Publication title

OurTemple

Issue Date

October 2010

Statement of
Frequency

Published monthly, except for
a combined June/July issue

Organization
Name/Address

Temple Emanu-El
2100 Highland Avenue
Birmingham, AL 35205-4002

Issue Number

22

A Message from our Rabbis:
"Access to a Spiritual Life"

We will have an extraordinary Shabbat on Friday evening, October 22nd. Our rabbis ask, "Who is wise?" And they answer the question by saying, "One who learns from all people." Our exceptional evening will be made so because of the wonderful speakers we have invited.



Rabbi Lynne Landsberg will be addressing our congregation. Rabbi Landsberg lives in Washington, DC. She was Rabbi Miller's classmate and good friend at the Hebrew Union College. In the middle of a remarkable career as a congregational rabbi and then on the staff of the Union for Reform Judaism, Rabbi Landsberg suffered a severe brain injury in a wintertime traffic accident on Washington's streets. She was close to death, and with great courage and support from family, friends and colleagues, she has returned back to herself (mostly).



Rabbi Landsberg has become an outspoken advocate for the disabled and a powerful voice for inclusion in our religious life. She is Senior Advisor on Disability Issues for the Religious Action Center of Reform Judaism, co-founder and co-chair of the Jewish Disability Network and serves on the Steering Committee of the Interfaith Disability Advocacy Coalition. Rabbi Landsberg is also founder and chair of the Central Conference of American Rabbis' Committee on Disability Awareness and Inclusion and is staff for the Union of Reform Judaism's (URJ) Task Force on Disability.

Additionally, our guest speakers at dinner will share with us their stories as well. **Miles Thompson** is the Head Coach of the men's wheelchair basketball team at the University of Alabama. This past summer he helped coach USA women's wheelchair basketball to the World Cup gold medal. Miles describes himself as a "passenger on the strange and powerful sub-culture of wheelchair basketball."

And **Abraham Hausman-Weiss**, 7th grader at Mountain Brook Junior High School, holder of many national records in wheelchair basketball, track & field, and swimming, has grown up at Temple Emanu-El. He loves Henry S. Jacobs Camp, hanging out with his friends, sports, and reading.

Rabbi Jonathan Miller

Rabbi Scott Hausman-Weiss

Cost for dinner is \$15 per adult, \$7 per child 5-12, children under 4 are free. Please RSVP to Fran Marlow at events@ourtemple.org or 933-8037, ext 244.

A Spiritual Journey Through the Aleph-Bet with Rabbi Scott

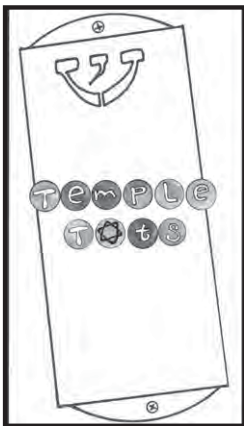
The **vav** is a funny letter, let me tell you why. I have taught Hebrew to kids and adults for years. And whenever I introduce the letter **vav**, I always liken it to the profile of (an albeit) very skinny person. I say, "if Mr. **Vav** gets hit in the head, his hand goes up and he says, "Oh!" (A **vav** with a dot above it acts as a vowel with the sound of "o.") But then I say, "If Mr. **Vav** gets hit in the stomach, he'll double over and yell, "oouu." (A **vav** with a dot in its middle acts as a vowel with the sound of "oouu.") That's where the kinesthetic teaching ends.

But there is still more. If, however, the **vav** has neither a dot above it or in the middle of it, then it will have a vowel below it that vocalizes it, thus, in this instance, making the **vav** a consonant with the sound of "v'." Additionally, in the text of the Torah, the **vav** has the capacity of turning time upside down. The **vav**, when placed before a verb in future tense re-signifies that verb as if it were in past tense. And when the **vav** is placed before a verb in past tense, it re-signifies that verb as if it were in future tense. I told you, the **vav** is a funny letter. It's an impersonator, a clown, a cross-dresser, if you will. It is flexible but with infallible integrity. It maintains itself as a **vav**, even while proving dynamic enough to allow language and time to transform by way of it.



The Rabbis teach that it is better to be like a reed that can bend in the wind than to be like an oak tree that in the face of the strongest of forces can only break. Like a reed, a **vav** stands tall, benighted by dots and vowels, a quiet part of the flow of the energy of the Hebrew language. It bends rather than breaks, as it accommodates the many needs it serves. Akin to a **vav**, in the service of clear communication and the sanctification of time, in what better way could we serve our fellow human beings? When they are down and out, when their souls are crushed, their spirits deflated, do we respond with a timidity of presence, questioning our worth in feeling as if we have nothing to offer? Or do we respond with a **vav**'s sense of purpose and strength? Do we straighten our spine and enter where time seems to be going by too slow or too fast? Or do we wait our turn, politely, until there is no more time left? **Vav** establishes a different order for our priorities. The most important items are forced to the front, the less important ones, when we act like a **vav**, have to wait their turn.

Our Youth & Education



Below: Marilyn Tanner reads to the Tots. Rabbi Scott stops in for a visit.



Rabbi Scott helps us bless our new garden that we hope will bring us pumpkins in the fall!



A Message from our new Administrator of Youth and Education



My name is **Allison Haynor** and I am extremely honored and excited to be the new Administrator of Youth and Education for Temple Emanu-El. I am originally from Atlanta, where I was a member of Temple Kehillat Chaim with Rabbi Harvey J. Winokur and NFTY-SER. I attended URJ Camp Coleman for many years, and was a counselor there for one year.



Oklahoma, and an older brother, Matt, who recently accepted a position as The Director of Middle and Upper School Instrumental Music at the Severn School in Maryland.

I ended up in Birmingham after falling in love with the city while obtaining my Bachelors degree in Elementary Education from the University of Alabama. I have two years of teaching experience with Shelby County Schools. I have a passion for working in education and most importantly with and around children. I look forward to sharing ideas with Rabbi Scott and helping to enrich the Youth and Education program at TEE. Most importantly, I am excited to meet and work with each and every one of the students enrolled in the Youth Education program.

I have two amazing parents – James and Lisa Haynor. I also have a twin brother, Danny, who is the Assistant Director of Event Management for The University of

Mark your calendars!

<p>October 3</p> <p>Religious School Music & Story Telling Performance with Janie Grackin (see page 5) 9:30a.m.-12:00p.m. 5th Grade in the Art Room (11:00a.m.)</p>	<p>October 6</p> <p>Hebrew School 3:30-5:45p.m. TEENs (Hands-On 1) & Confirmation 5:45-7:30p.m.</p>	<p>October 10</p> <p>NO RELIGIOUS SCHOOL</p>	<p>October 13</p> <p>Hebrew School 3:30-5:45p.m. No TEENs</p>
<p>October 17</p> <p>Religious School 9:30a.m.-12:00p.m. Kindergarten Parent/Child Wkshp 10:00a.m.</p>	<p>October 20</p> <p>Hebrew School 3:30-5:45p.m. TEENs (Hands-On 2) & Confirmation 5:45-7:30p.m.</p>	<p>October 24</p> <p>Religious School 9:30a.m.-12:00p.m. 4th Grade in the Art Room 11:00a.m.</p>	<p>October 27</p> <p>Hebrew School 3:30-5:45p.m. TEENs (Hands-On 3) & Confirmation 5:45-7:30p.m.</p>
<p>October 31</p> <p>Religious School 9:30a.m.-12:00p.m. 6th Grade B’Nai Mitzvah Class 10:00a.m.</p>			

Reconfirmation Fall 2010 "God and The Big Bang"

Based upon the award winning text of the same title by Daniel Matt, we will explore the controversial nexus between science and religion.

1. *If the Torah says "God created the world in seven days," what is it supposed to mean?*
2. *Do the depths of scientific study that draw scientists closer and closer to understanding the origins of the universe necessarily contradict the biblical tales?*
3. *Can science bring us closer to spiritual truths and can the Torah bring us closer to a more meaningful scientific approach?*
4. *If scientists could prove the origins of the universe beyond a shadow of a doubt, is God then null and void?*

Join Rabbi Scott as we peel back the layers of the culture wars that pit the Bible against the science. Does there have to be a loser? And if there is, is it us?

Bring your lunch and settle in from 12:00-1:00p.m. in the Jasper Learning Center on **October 5th, 12th, 19th, and 26th** as well as **November 2nd and 9th** for a fascinating and illuminating learning and discussion.

For more information, please contact Dina Hagler at 933-8037 ext. 230 or dh@ourtemple.org.

On October 3, 9:30a.m. – 12:00p.m., Temple Emanu-El Religious School is proud to welcome:

Jewish Storyteller and Educator, Janie Grackin for a morning of stories, music and learning

Janie Grackin uses the art of storytelling to inspire and educate. Janie creates programs for intergenerational populations in synagogues and



schools in the United States, England and Israel, and now includes "Storahtelling," the most cutting edge approach to teaching Torah. In 1997 she was inducted into the National Women's Hall of Fame for her commitment to AIDS education. In 2005 she was awarded the Solomon Schechter Gold Award for Family Education, and on a national level, has served as the co-chair of the CAJE Jewish Storytelling Network.

"Janie is a weaver of the soul, transforming text into profound art and transformational experiences."

--Amichai Lau-Lavie, Executive and Artistic Director, Storahtelling Inc.

All students will get to spend time with Ms. Grackin at different points in the morning.

Notes from our Caring Committee

Attention Congregants: The Caring Committee delivers special gifts in time for the holidays to our seniors. If you or if your loved one is aged 80+ and you'd like to be on our gift-recipient list, please contact us. Call Julie Levinson-Gabis at 205.930.5824. Or, email Julie at bjgabis@bham.rr.com.

The Caring Committee just finished a High Holiday delivery to some members of our senior congregation. Included in the gift bag was a loaf of challah bread, a jar of honey and a beautiful apple so recipients would be blessed with a sweet new year.

A big thank you goes out to all of our volunteers who shopped and prepared the items, assembled the bags and made the deliveries. The list of volunteers includes: ***Gail Bayer, Sharon Bromberg, Mark Cohen, Sharon Cutter, Ellen Elsas, Carol Gross, Randi & Ellen Landy, Lee Lichter, Bob Marcus, Judy May, Judi Miller, Renee & Bernie Schulman, Susan Swartz and Linda Verin.***

A special recognition goes to **Bob and Letty Marcus**, who do such a wonderful job of delivering a condolence plant to our congregants in mourning. Thanks to Sharon Cutter for writing "get well" cards to our congregants who are on the Mi Shebeirach list. If you know of anyone who needs some "TLC" in the form of a get well card, please notify Sharon at gcutter@aol.com or Julie Levinson-Gabis at bjgabis@bham.rr.com.

Our Members

WHAT'S HAPPENING WITH OUR SISTERHOOD?

IT'S HERE...
The "Oy Vey Café"

**Sunday, October 3 from
9:30a.m. – 12:00p.m.**

The Sisterhood & Brotherhood of Temple Emanu-El are sponsoring a "gathering place" for whatever you need...with free coffee & bagels, too!!

Come join us to...

Relax....Meet friends...

Enjoy a peaceful (free!) cup of coffee and a bagel...

Play games or read a book...

Whatever puts a smile on your face!

Just stop by for a few minutes or an hour!!

Let us know what you would like this to be. Give us ideas for engaging discussions or "classes." This is for YOU... so help us make it fun!!



We hope to see you on October 3rd!!

Paid-Up Member Wine-Tasting Event Join Now to Attend!



HURRY...HURRY...Get your dues paid for membership in the Sisterhood of Temple Emanu-El so you won't miss this special evening...wine-tasting at Debbie Wiatrak's home!

We wouldn't be able to continue to support and provide all the wonderful programming for the women, children, and families at Temple Emanu-El without your participation!

So...we want to hold a special event to thank you for your role in helping us with these worthwhile projects.

This exclusive evening of wine, nibbles & fun will only be available to those members who have paid their dues by October 1...so send in your check today!!

We will entertain all paid members on Thursday, October 7 at 7:00p.m. at the Wiatraks' home (4931 Cold Harbor Drive.)

PLEASE RSVP to Lisa Bebenek **by Monday, October 4** at pbebenek@aol.com or **969-2646** if you'll join us so we can be sure to have enough wine & snacks for all!

TOGETHER WE CAN MAKE A DIFFERENCE!!!

Scrapbooking/Card Making

October 3 from 1:00–7:00p.m.

Come join the fun!

We met in August and got off to a great new year of crafting. Everyone had fun "doing their own thing," making new friends, greeting old friends, and in general having an enjoyable afternoon.

Come for a little while or stay the whole time...whatever fits with your schedule!

Dina Glass will be there to guide and assist you...with all her "toys" & tools...in creating your own masterpiece... whatever form that takes!

Just bring a snack to share & \$10 to cover Dina's time and supplies used.

RSVP to Kim Roth at kimroth@charter.net or **733-1723**.

You won't want to miss it!!!



Sisterhood Bulb Shop

Opens on Sunday, October 31st and runs through Friday, November 5th!!!

Everyone knows we have the biggest, best, and most beautiful bulbs ordered directly from Holland and on sale at Temple Emanu-El!

We will be open Sunday, 9:30a.m.-12:00p.m.; Monday & Thursday, 9:30a.m.-4:00p.m.; Tuesday, 9:30a.m.-6:00p.m.; Wednesday, 10:00a.m.-5:30p.m.; and Friday 9:30a.m.-2:00p.m.

If you ordered bulbs, you may pick them up during the above times at the Temple in Weil Hall. If you need to make special arrangements, please call Loretta Newfield at 933-8037.

If you haven't yet ordered your bulbs, NO PROBLEM!!

We've ordered extras to sell in our shop! We have hyacinths, tulips, daffodils, amaryllis and more in many colors and combinations.

Support your Temple with your purchase of Sisterhood Bulbs!



B'not Mitzvah

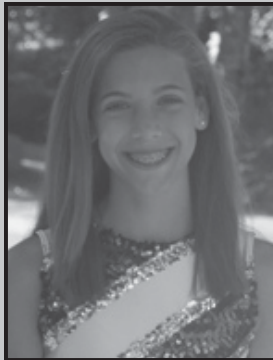
Laine Francis Meisler
October 2

Laine is the daughter of Pam Meisler and Irving Meisler. Grandparents are Nancy & Gerry Haase of McDonough, Georgia and Fanny & Bert Meisler of Mobile, Alabama. Celebrating with Laine are her sisters Emily and Seline, and many other family and friends from various places.



Jessica Elizabeth Sirkin
October 23

Jessica is the daughter of Caroline and Neil Sirkin. Celebrating with Jessica are her sisters Jennifer and Allie, and many other family and friends.



Save The Date: Sunday, December 5 Brotherhood Chanukah Raffle and Lunch!

Please join us for our annual luncheon with great food and prizes!



Thank you to all the Brotherhood members who served as ushers and greeters at Rosh Hashanah and Yom Kippur.

TEMPLE EMANU-EL CHORALE

Thursdays beginning October 14
5:30-7:00p.m.

Temple Emanu-El Music Room
on the second floor



Do you enjoy singing in a group?

Join your fellow congregants in our new Temple Emanu-El Chorale to sing during Shabbat services and other events in the community. It'll be the highlight of your week!

Interested? Please contact Cantor Jessica Roskin at cantorjroskin@ourtemple.org.

TIKKUN OLAM COMMITTEE

Each month, Temple Emanu-El chooses a specific cause for our Tzedakah Box. Our October cause is HIV/AIDS OUTREACH.

Through the Tikkun Olam, Temple Emanu-El supports three organizations that provide programs and services to people and families affected by HIV & AIDS. These three agencies are UAB's 1917 Clinic, AIDS Alabama, and Birmingham AIDS Outreach (BAO).

All three agencies benefit from the annual Magic City AIDS Walk. This year the event will take place on Sunday, September 26 at Caldwell Park. Additional information on the event and other activities can be found on BAO's website at <http://www.birminghamaidsoutreach.org>.



Temple Emanu-El Fall Fundraiser

BINGO NIGHT

Sunday, November 7

5:00-7:00p.m.

\$36/Family \$18/Individual

Includes dinner and one bingo card per person
Additional cards will be on sale for \$5
Cash bar

Babysitting will be provided for children 5 and under
Your check is your reservation.

Please let us know by Wednesday, October 27.

Please call **Jennifer Nemet** at 588-2331 or **Lisa Bebenek** at 969-2646 with questions or concerns.



Our Members

Mazel Tov to Our Members!!

Rotesha Anderson & **Rye Zinder** on the birth of their new baby, Kylan Ja'Veon Zinder on July 12. Proud grandparents are **Adrienne & Keith Zinder**.

Ben Leaf on his induction into the Air Force on August 16. Ben is the son of **Kim & Steven Leaf**, grandson of **Leah Leaf** and Barbara Mason and brother of **Dani Leaf**.

Mesch AZA members who were elected to the Board for the upcoming term: President (Godol) - **Brian Richards**, Vice President (S'gan) - Jared Bloomston, AIT Dads (Moreh) - Brandon Bloomston and **Robert Ascherman**, Treasurer (Gizbor) - Brandon Feigelson, Secretary Corresponding (Mazkir) - Sam Black, Secretary Recording (Mazkir) - Noah Lapidus, Judaic Chairman and Community Service/Social Action chairman (Shliach) - Joe Bloomston.

Magic City BBG members who were elected to the Board for the upcoming term: N'siah (president) - Ilana Engel, S'ganit (vice president) - Rachel Fleisig, MIT Moms (membership) - Kendal Jaffe and **Lauren Saag**, Gizborit (treasurer) - **Emmy Egli**, Mazkirah (corresponding secretary) - **Callie Blitz**, Katvanit (recording secretary) - Hannah Kahn, Orechet (historian) - Laura Bogart, Shlichah (Judaic and Community Service/Social Action chairwoman) - Joycie Bernstein and Madricha (past-president) - Ali Bloomston.

Mary Anne & Mike Freeman on the honor of Samford University and its School of the Arts naming the core part of the Department of Theatre and Dance 2010-11 season the **Michael J. and Mary Anne Freeman Theatre and Dance Series**.

Judy & Hal Abroms who will receive the 2010 Outstanding Philanthropist award from the Association of Fundraising Professionals' annual National Philanthropy Day Awards to be held on Thursday, November 18.

Honorable Menschens

Thank you to all of our congregants who volunteered their time so generously in August to take on various duties such as preparing our bulletin for mailing, answering doors and phone, doing filing, greeting on Friday evenings, and various special projects. You help make Temple Emanu-El a friendlier and more efficient place.

Joan Becker, Barbara Capper, Alan Davis, Carlotta Dorn, Richard Goldstein, Irene Ekstra, Alex Epstein, Chu-Chi Fierman, Ilene Johnson, Fred Kanter, Herc Levine, Joe Lichtenstein, Bob Marcus, Joselle Morewitz, Loretta Newfield, David Reese, Kim Roth, Ina Russakoff, and Irvin Siegal.

If you would like to volunteer at Temple Emanu-El, we would welcome you! Contact Alan Pearlman at ext. 238.

Condolences to...

The family of Marcia Berman Kraselsky of Huntsville, who passed away on Thursday, July 22. Our sincere condolences to her husband Maurice "Krip" Kraselsky, her brother, **Alan Berman (Sandra)**, and her nephew, **Robert Berman (Alison)**.

Family of **Sally Tanner** who passed away on Tuesday, August 3. Our sincere condolences to her son, **Murray Tanner (Marilyn)** and her granddaughters, Sharon Sowry and Robin Winner (Dr. David Winner). She is also survived by four great-grandchildren.

The family of Otto Ernest Goedecke of Houston, who passed away on Tuesday, August 3. Our sincere condolences to his wife, Barbara; his son, **Glenn Goedecke (Nancy)**; and his grandsons, **David** and **Scott Goedecke**.

Family of Lazar Cusmariu of West Orange, New Jersey, who passed away on Wednesday, August 4. Our sincere condolences to his wife, Mia; his children, **Dr. Jeffrey Cusmariu (Tamara)** and Mirabella Sheppard (Jack); and his grandsons, **Benjamin** and **Zachary Cusmariu** and Evan and Nolan Sheppard.

The family of Elvin Kanter of Albuquerque, New Mexico who passed away on Monday, August 9. Our sincere condolences to his siblings **Shirley Osband (Richard)** and Joe Kanter; his children Deborah (David Bartis), Dana (John Grubestic) and Stephen (Bernadette Ryan); and seven grandchildren, Henry, Eleanor, Jessica, Jack, Mason, Tara and Sienna.

The family of **Sherry Laxer**, who passed away on Friday, August 20. Our sincere condolences to her daughters Eve Laxer and Roberta Laxer; and her grandchildren Amory Warren Strange and Elan Laxer Strange.

October Yearzeits

May the beauty of their lives shine forever, and may we always bring honor to their memory.

October 1-2

Herman Adler
Lynne C. Alexander
Sadie C. Barstein
Rose Abraham Bayer
Sidney Bernstein
Helen Biedinger
Ralph Carl Blach, Sr.
Herman Blumberg
Dudley Burwell
William Boddie Cliett
Robert Greg Coons
Dorothy Epstein
Mickey Fineberg
Richard Finkelstein
Harry Fitlow
Golda Fox
Alfred Freeman
Selma Friedman
Carrie L. Hagedorn
Joseph E. Hirsch
Joseph Jakub, Sr.
Hannah Kaufman
Patrick Kilcullen
Mitzi Kronenberg
Rose Magness
Rose Krentzman Odess
Freda Pincus
Annie B. Prochep
Sherman C. Raffel
Frances Rosenbush
Vernon R. Rosenthal
Aaron Sachs
Irving Silverman
Joseph Solomon
Morris Solomon
Sam Spiegelman
Mary Trammell
Mollie Weiss
Charlotte Weiss
Meryl Wilkoff
Benjamin B. Wolf
Lois Zimmerman

October 8-9

Bruce Riggan Andrews
Walter M Ash
Ira D Bayer
Lynn Brandler
Mildred Cohn
Joseph David Cooper
Sam Diamond
David Echt
Stanley Elsas
Lena Epstein
Abe Feinman
Samuel Paul Fink
Ben Golden
Louis Goldman
Jeanette Gottlieb
Sidney Held
Gloria W. Jacobs
Dorothy Jacobson
Meyer Louis Kanner
Bessie Krentzman
Henry Lazarus
Jenny Levy
Max H Mayer
Samuel Michael
Fannie Minisman
Dora Clein Moore
Szymon Nagrodzki
Dora Mitnick Nahum
Phillip H Ripko
Samuel Julius Ripps
Amelia A. Rittenbaum
Arthur H. Rosenfeld
Gertrude Rutenberg
Minnie E. Schwartz
Mike W. Siegel
David Siegel
Nat W Simon
Shirley R Snow
Jeanne F. Sterman
Dorothy Tepper
Lee B. Weil
Virginia Loeb Weil
Howard S. Weinstein
Sallie Mae Wiener
Bettie S. Wolfsohn
Ethel Wynne

October 15-16

Bertha Phillips Blank
Henry Blumenblatt
Eleanor Cersonsky
Hirsch Cherner
Mikhail Chernitsky
Jerome "Buddy" Cooper
Eunice Wetherhorn Copeland
Glen Creel
Harry B. Elmets
William P. Engel
Irvin Floam
Louis Lazarus Friedman
Ralph Frohsin, Sr
Annie Felson Galkin
Edward Goodman
Tavel Grabove
Gloria Greenstein
Elizabeth R. Held
Anna Horowitz
David B. Jacobs
Leonore Purvin Jacobson
Duane Johnson
Minnie Kushner
Fannie Gusdorf Leva
Rae G. Levine
Millie Patterson Lurie
Elizabeth M. Mahaffey
Morton Jerry Marks
Robert McKinnon
Greta Melomed
Bess Kapp Miller
Louis Overbach
Mildred Posner
Sol A. Reese
Max Risman
Frances Rittenbaum
Albert L. Roseman
Ida Berman Rosen
Regina Rosenfeld
RUBY ROSENFELD
Byron Rowan
Carl Ruck
Edward Saag
Alvin Sackler
Belle K. Spiegelman
Dorothy Shugerman Unger
Irving Wilkoff
Barry Ziff

October 22-23

Barbara Abrams
Frank Benjamin
Addie Bernstein
Herbert Meyer Besser
Marie Geismar Blach
Max Cohen
Annie Drew
Estelle Eubanks
Rebecca Feinman
Alice Lurie Friedman
Jenny Witt Goldstein
Sarah Engel Green
Arthur Hagedorn
Naomi Carroll Haimsohn
Janice Friedman Halpern
Elizabeth Johnson
Lena Lewis Kanter
Sam Kartus
Sarah Kaufman
Ida Kartus Lefkovits
Ida E. Levenson
Jenny Lober
Fannie Weil Loeb
Mae Loewe
Louis J. Malkove
Wendy Marlowe
Sylvia Mazer
Maurine H. Monsky
Josephine G. Morris
Vincent Owen Munn
Simon Phillips
Rose Menchel Rapoport
John Rathmell
Natalie Rosenfarb
Isadore Rotenstreich
Lela Saag
Elaine Silver
Isaac Simpson
Leo K. Steiner, Sr.
Morton Sussman
Abraham L. Swartz
Edith G. Tenenbaum
Bill Twyford
Anna Franklin Weil
Robert Weinstein
Gene Wolf

October 29-30

Judy Clay Warren Bartos
Louis Bayer
Max Beck, Sr.
Ida K. Beiman
Julian L. Bernheim
Max Binder
Melvin Bluestein
Adolf Bluttman
Jim Brady
Hans Curjel
Mildred Cutter
Rosalee G. Dannis
Max Dubrinsky
Dave Eisenberg
Joseph Engel
Carl M Feldman
Helen B. Fierman
Fanny Fies
Irwin M. Fishman
Tommy Gillespie
Jean Ginsburg Goddard
Volosova Golda
Harry Goldner
Gloria Meisel Greenberg
Sarah Halpern
Adolph I. Hamburg
Rubin Hanan
Florette Hirsch
Bernice G. Hirsch
Josephine Kaplan
Charles D. Klotzman
Edith Koretzky
Israel Kronenberg
Nathan Levy
Lillian Livingston
Annie Luria
Mildred S. Marlowe
Harold Marlowe
Marjorie Hanover Marlowe
Bernice Marx
Hilda Mendelsohn
Abe Nedoss
Lewis J. Odess
Fay Oppenheim Odess
Sam Picard, Jr.
Luther M. Proctor
Sadie Rice Rich
Rose Newman Risman
Eleanor Levy Roseman
Ruth D. Rosenberger
Hyman Rosner
Rosa Israel Sachs
M Edna Schoen
David Schultz
Morton Simpson
Allan I. Sirkin
Efrim Statnikoff
Milton "Buddy" Sterman
Linda Aland Sussberg
April Lee Weil
Albert Zern

Our Contributions

We appreciate the thoughtfulness of those who support Temple Emanu-El and our Endowment Fund by remembering and honoring their friends and loved ones through their generous contributions. Thank you for the following gifts received through August 19, 2010.

Endowment Fund Contributions

GENERAL ENDOWMENT FUND

In Memory Of:

Judith Todd Abrams

by Bernice Barstein

by Marion Breyer

by Lois & David Cohen

by Dorothy Dubowsky

by Helene Elkus

by Gertrude Goldstein

by Nancy Nagrodzki

by Ilse Nathan

by Margo & Michael Pitt

by Linda Verin & Rick Clay

Jack Aland, Sr. and Linda Aland Sussberg

by Ellen Aland

Arthur Berman, Bertha Berman and

Sadie Berman

by Sandra & Alan Berman

Fred Berman, Abe Kaplan, Ralph Levene

and Sissy Toronto

by Marian & Ron Epstein

Esther Eisner

by Renee & Bernie Schulman

Lee Freedman

by Dorothy Dubowsky

by Gertrude Goldstein

by Ilse Nathan

Otto Goedecke, father of Glenn Goedecke

by Mary Lynne & Eli Capilouto

by Lynne & Mark Cohen

by Nancy & David Denney

by Nancy Nagrodzki

by Margo & Michael Pitt

by Rosalyn & Irvin Siegal

Barbara Goldenberg and Jerry Hellman

by Babs Perlman

Charles Gross and Don Watkins

by Doris & Fred Kanter

Elvin Kanter, brother of Shirley Osband

by Rosalyn & Irvin Siegal

Barbara Kisber-Gordon

by Bernice Barstein

by Anne Silberman

Marcia Kraselsky, sister of Alan Berman

by Linda Cohn

by Mitzi & Donald Goldstein

by Joyce Helzberg

by Ricky Koslin

by Babs Perlman

by Rosalyn & Irvin Siegal

Ronald Leaf

by Bernice Barstein

by Rosalyn Bloomston

by Helene Elkus

by Marian & Ron Epstein

by Judy Garfinkel

Helga Mendel and Bernard Steiner

by Anne Silberman

Sally Tanner

by Rosalyn Bloomston

by Patsy & Charles Collat, Sr.

by Cheryl & Charlie Collat, Jr.

by Marian & Ron Epstein

by Nancy & Glenn Goedecke

by Mitzi & Donald Goldstein

by Joyce Helzberger

by Gail & Chares Herman

by Doris & Fred Kanter

by Rhoda Kaplan

by Ricky Koslin

by Donna & David Kraselsky

by Lill & Jerry Lapidus

by Blanche Rogoff

by Lana & Steve Royal

by Rosalyn & Irvin Siegal

THE ANNUAL ENDOWMENT GIFT PROGRAM

Enriching Our Temple – Now and Forever



- ✧ **Through these annual gifts to the Endowment Fund, we are able to reap the benefit** of having a healthy foundation to enrich our Temple's adult and youth education, cultural programming and building preservation efforts each year. Our Endowment currently provides nearly 10% of our Temple's income – much of which is specifically earmarked for program enrichment.
- ✧ **Last year, over 250 of our members participated** in this program to help build our Endowment Fund assets. Our goal this year is for 300 families to join in this effort to build our endowment fund -- this is truly a program designed to enable every member to participate!
- ✧ **Gifts of all sizes are welcome** – minimum gifts are \$25 – and may be paid in installments through June 30.
- ✧ **Special Benefits** -- we offer the opportunity to those making a gift of \$100+ to receive the convenience of being able to simply phone in or e-mail their acknowledgement information for ten (10) complimentary contributions. Those making gifts of \$250 or more also receive these benefits and include thirty (30) complimentary acknowledgments.
- ✧ **It is a great way** not only to send tributes for special occasions or in memoriam – but also to honor our clergy or teachers at Hanukkah or other occasions throughout the year.
- ✧ **Reply Now – so that your pledge to participate is received by Dec 31;** however, payments are not due until June 30, 2011. Just contact Barbara in the Endowment Fund Office at 933-8397 with questions or to make arrangements for your gift. *Thank you.*

Our Contributions

Wishing Good Health To:

Charlotte Corenblum

*by Shirley & Julius Goldstein
by Babs Perlman
by Blanche Rogoff*

Jack Held

*by Ellen Dorsky
by Mitzi & Donald Goldstein
by Joyce Helzberg
by Doris & Fred Kanter
by Babs Perlman*

Mackie Horowitz

by Linda Verin & Rick Clay

Ethel Laufman

by Shirley & Julius Goldstein

In Honor Of:

Birth of Millie Blair, great-granddaughter
of Howard Schultz

by Anne Silberman

Special anniversary of

Gayle & Eddie Leitman;

Special birthday of Gaston Stein

by Barbara & Harvey Gotlieb

Special birthdays of Doris & Fred Kanter

by Babs Perlman

Special anniversary of

Isabel & Alan Siegal

by Rosalyn & Irvin Siegal

Special birthday of Carlotta Dorn

by Blanche Rogoff

Special birthday of Joyce Lichtenstein

by Bernice Barstein

Special birthday of Ed Russell

by Marian & Ron Epstein

by Anne Silberman

by Sam Tenenbaum, Jr.

Welcoming Bernie Verin to Birmingham

by Linda Verin & Rick Clay

UNRESTRICTED NAMED ENDOWMENT FUNDS

In Memory of:

Judith Todd Abrams

*by Betty & Bob Anfanger
by Barfield, Murphy, Shank & Smith, P.C.
by Bradley, Arant, Boulton & Cummings, P.C.
by Marilyn & Perry Brown
by Anne Cohn
by Eileen & Robert Cohn
by Nancy & David Denny
by Mrs. Allan Denson
by Sallie & Bruce Downs
by Lisa & Alan Engel
by Ruth & Marvin Engel
by Arlene & Murray Fisher
by Jan & David Fox
by Catharine & Eddie Friend
by Sylvia Gouse
by Anita Harwood
by Susan & David Harwood
by Monty & Carl Hess
by Ronne & Donald Hess
by Heidi Hess & James Rucker*

by Jimmie Hess

by Mary Kamplain

by Emily & Bob Levine

by Lisa & Nathan Lowrie

by Molly Myers & Rick Hatfield

by Susanna Myers & Gerry Pampaloni

by Christy & David Nelson, Jr.

by Hilary & Stuart Nelson

by Jeanie & Harris Klein

by Ricki & Lanny Kline

by Rosalind & Danny Markstein

by Judy & Gerson May

by Hope & Kerry McInerney

by Jennifer Michelson

by Morris Middleton

by Joy & Willard Moore

by Jamie, Greg & Daniel Odrezin

by Lenora Pate & Steven Buckman

by Mary Phillips

by Eric Pruitt

by Dorothy Shiland

by Ruth Siegler

by Sirote & Permutt, P.C.

by Ethelyn Slaughter

by Laurie & Zachary Solomon

by Elinor & Michael Staff

by Jay Travis III

by Rhonda & Harry Weinberg

to Judy Todd & Ted Abrams Fund

by Frances Cypress

to Frances & Conrad Cypress Family Fund

by Betty Goldstein

to Betty Goldstein Fund

by Ginger & Jerry Held

to Ginger & Jerry Held Fund

by Cissy & Leonard Held

to Cissy & Leonard Held Fund

to Judy & Jimmy Rotenstreich

to Judy & Jimmy Rotenstreich Fund

by Janet & Leonard Wertheimer III

to Wertheimer Family Fund

Fred Berman

by Nancy & Harold Blach, Jr.

to Blach Family Fund

to Judy & Jimmy Rotenstreich

to Judy & Jimmy Rotenstreich Fund

Jon Biedinger, brother of Karl Biedinger

by Amy & Michael Saag

to Pat & Leonard Weil Fund

Arthur Centor, Ivan Golden, Abe Kaplan,

Earl Shugarman and Milton Turner

by Judy & Jimmy Rotenstreich

to Judy & Jimmy Rotenstreich Fund

Leah Elsas

by Miriam Cohn

to Lee & Stanley Elsas Fund

Lee Freedman

by Anne Cohn

to Judy Todd & Ted Abrams Fund

Gladys Friedman

by Nancy & Harold Blach, Jr.

to Blach Family Fund

by Judy & Jimmy Rotenstreich

to Judy & Jimmy Rotenstreich Fund

Otto Goedecke, father of Glenn Goedecke

by Janet & David Aarons

to Aarons Family Fund

by Rochelle & Michael Koslin

to Rochelle & Michael Koslin Family Fund

by Denise & Wayne Lewis

to Nathan Lewis Memorial Fund

by Letty & Bob Marcus

to Letty & Bob Marcus Fund

by Bunny & Joel Rotenstreich

to Bunny & Joel Rotenstreich Family Fund

by Amy & Michael Saag

to Pat & Leonard Weil Fund

Chester Goldberg

by Miriam Cohn

to Ives Family Religious School Fund

Sam Goldberg, father of Barbara Gotlieb

by Frances Cypress

to Frances & Conrad Cypress Family Fund

Jerry Hellman

by Cissy & Leonard Held

to Cissy & Leonard Held Fund

Julius Lee Herman

by Carol & Donald Herman

to Carol & Donald Herman Family Fund

Arnold Holzer, Sr.

by Carlotta Dorn

to Loretta & Mayer Ullman Newfield Fund

Rita Kimerling

by Sharon & Edward Bromberg

to Frances & Conrad Cypress Family Fund

to Judy & Jimmy Rotenstreich

to Judy & Jimmy Rotenstreich Fund

Marcia Kraselsky, sister of Alan Berman

by Frances Cypress

to Frances & Conrad Cypress Family Fund

by Letty & Bob Marcus

to Letty & Bob Marcus Fund

to Judy & Jimmy Rotenstreich

to Judy & Jimmy Rotenstreich Fund

by Bunny & Joel Rotenstreich

to Bunny & Joel Rotenstreich Family Fund

by Michael Saag Family

by Pat Weil

to Pat & Leonard Weil Fund

Our Contributions

Endowment Fund Contributions, cont'd

Ronald Leaf

by Nancy & Harold Blach, Jr.

to Blach Family Fund

by Alex Epstein

to Gladys & Alex Epstein Family Fund

by Cissy & Leonard Held

to Cissy & Leonard Held Fund

to Judy & Jimmy Rotenstreich

to Judy & Jimmy Rotenstreich Fund

by Amy & Michael Saag

by Pat Weil

to Pat & Leonard Weil Fund

by Janet & Leonard Wertheimer III

to Wertheimer Family Fund

Ralph Levene, Mae Rosenberger and

Sissy Toranto

by Nancy & Harold Blach, Jr.

to Blach Family Fund

Yale Niren

by Letty & Bob Marcus

to Letty & Bob Marcus Fund

Bernie Reznik

by Frances Cypress

to Frances & Conrad Cypress Family Fund

by Janet & Leonard Wertheimer III

to Wertheimer Family Fund

Frances Savage

by Sharon & Edward Bromberg

to Frances & Conrad Cypress Family Fund

Sally Tanner

by Gail & Harry Bayer

to Gail & Harry Bayer Fund

by Joan & Jack Becker

to Becker Family Fund

by Carol & Bob Gross

to Carol & Robert Gross Family Fund

by Cissy & Leonard Held

to Cissy & Leonard Held Fund

by Gayle & Eddie Leitman

to Gayle & Eddie Leitman Fund

by Letty & Bob Marcus

to Letty & Bob Marcus Fund

by Carole & Michael Pizitz

to Carole & Michael Pizitz Fund

by Judy & Jimmy Rotenstreich

to Judy & Jimmy Rotenstreich Fund

by Bunny & Joel Rotenstreich

to Bunny & Joel Rotenstreich Family Fund

by Janet & Leonard Wertheimer III

to Wertheimer Family Fund

Wishing Good Health To:

Nathan Allen, Charlotte Corenblum,

Penny Gordon, Bernice Pearlman and

Dodie Sokol

by Cissy & Leonard Held

to Cissy & Leonard Held Fund

Harry Bayer

by Betsy & Peter Printz

to Betsy & Peter Printz Fund

Freda Centor and Rachel Rosenthal

to Judy & Jimmy Rotenstreich

to Judy & Jimmy Rotenstreich Fund

Jack Held

by Barbara & David Betten

by Irene Raymond

by Melvin Sokol

by Joan & Donald Weisberg

to Evelyn & Jack Held Fund

by Joan & Jack Becker

to Becker Family Fund

by Nancy & Harold Blach, Jr.

to Blach Family Fund

by Cissy & Leonard Held

to Cissy & Leonard Held Fund

by Letty & Bob Marcus

to Letty & Bob Marcus Fund

by Pat Weil

to Pat & Leonard Weil Fund

Dick Pizitz

by Carole & Michael Pizitz

to Carole & Michael Pizitz Fund

In Honor Of:

Bar Mitzvah of Frank Nelson;

Special birthdays of Dale Glenn and

Dukie Roos

by Cissy & Leonard Held

to Cissy & Leonard Held Fund

Birth of Millie Blair, granddaughter of

Rhonda & Harry Weinberg

by Janet & Leonard Wertheimer III

to Wertheimer Family Fund

Marriage of Mark Nagrodzki, grandson of

Carole & Michael Pizitz, to

Shannon Mantell

by Carole & Michael Pizitz

to Carole & Michael Pizitz Fund

Rabbi Miller's escape from injury

by Letty & Bob Marcus

to Letty & Bob Marcus Fund

Special anniversary of Bunny &

Joel Rotenstreich

by Betty Goldstein

to Betty Allenberg Goldstein Fund

Special birthdays of Judy Aland,

Betty Loeb and Loretta Newfield

to Judy & Jimmy Rotenstreich

to Judy & Jimmy Rotenstreich Fund

Special birthday of Miriam Cohn

by Sharon & Edward Bromberg

to Frances & Conrad Cypress Family Fund

by Janis Friedman

to Janis & Paul Friedman Fund

to Judy & Jimmy Rotenstreich

to Judy & Jimmy Rotenstreich Fund

Special birthdays of Dale Glenn and

Dukie Roos

by Cissy & Leonard Held

to Cissy & Leonard Held Fund

MUNCY ABROMS

TEMPLE TOTS FUND

In Memory Of:

Joseph Berman

by Brenda Bell-Guercio

Ronald Leaf

by Carol Solomon

Don Watkins, father of Ashby Watkins

by Sheree & David Kanter

by Charles Stein

Wishing Good Health To:

Jack Held

by Carol Solomon

In Honor Of:

Special birthday of Edward Russell

by Carol Solomon

HANNAH & HYMAN GOLDSTEIN

VOLUNTEER FUND

In Memory Of:

Sally Tanner

by Gale & James Atkinson

by Barbara & David Betten

by Kathleen Cottingham

by Janet & Morton Goldfarb

by Debra & Joel Goldstein

by Regina & Douglas Malloch

by Lucy & Buddy Schulhafer

by Elinor & Michael Staff

by Rhonda & Harry Weinberg

Judy Todd Abrams and Bernie Reznik

by Debra & Joel Goldstein

Otto Goedecke, father of Glenn Goedecke

by Debra & Joel Goldstein

by Marilyn & Murray Tanner

Wishing Good Health To:

Jack Held

by Marilyn & Murray Tanner

EDWARD & HERMIONE FRIEND

COMMUNITY FUND

In Memory Of:

Judy Todd Abrams, Jon Biedinger,

Lee Freedman and Ronald Leaf

by Linda & Richard Cohn

STEINER INTERFAITH FUND

In Memory Of:

Leah Elsas and Marion Solomon

by Arnold Steiner

Temple Contributions

TEMPLE GENERAL FUND

In Memory Of:

Carrie Crine Levine, Hyman Maurice Levine., Sr. and Louise Levine Komber

by Rosalee & Herc Levine

Bob Engel

by Lillie E. Buchstane

Paul Friedman, Sr.

by Sandy Friedman

Muriel Goldstein

by Shirley & Julius Goldstein

Sarah Gross and Charles Gross

by Sheldon Gross

Marcia Kraselsky

by Anne E. Cohn

by Joan & Don Weisberg

Gilbert Odrezin

by Gregory T. Odrezin

Edward Siegel

by Isabel & Alan Siegel

RABBI JONATHAN MILLER DISCRETIONARY FUND

In Memory of:

Sally Tanner

by Marilyn & Murray Tanner

In Honor of:

Our wedding in June

by Michelle & Marty Lax

Rabbi Miller's safe return from his trip and escaping injury in the bus wreck

by Linda Cohn

Wishing Good Health to:

Mackie Horowitz

by Renee & Bernie Schulman

Donation:

By Janis Friedman

CANTOR JESSICA ROSKIN DISCRETIONARY FUND

In Memory of:

Judith Todd Abrams

by Bobbie & Don Siegal

Ronnie Leaf

by Ingrid & Howard Roskin

Sally Tanner

by Marilyn & Murray Tanner

Wishing Good Health to:

Deborah Chargois

by the Bill Goldman Family

LIBRARY FUND

In Memory of:

Abe Kaplan

by Caroline Marx

MS. LOIS SCHOLARSHIP FUND

In Honor of:

The adoption of Cody & Destin Hirsberg

by Susan, Karl, and Kelly Biedinger

MUSIC FUND

In Memory Of:

Ronald Leaf

by Ann & Donald Capps

by Priscilla & Barton Leaf

by Jenmye McCreary

by Michelle Oliver

by Pediatric Anesthesia Associates, P.C.

by RIA Bonds, Inc.

SEWING GUILD FUND

In Honor of:

Special Birthday of Carlotta Dorn

by Ilene & Ken Johnson

Special High Holiday
THANK YOU To:

City Paper Company and The Friedman Family for donating the High Holiday Food Bags. Each year they have provided them which have allowed all our generous Jewish Community to bring food forth to those in need.

Sherron and Allen Goldstein for once again providing our Yom Kippur Break-The-Fast.

We welcome our new members (as of August 17, 2010):

Barry & Alana Bloomston
Son & Daughter-Josh and Zoey

Jody Bradley-Ruby

Lin Carleen

Brett Koretzky & Lena Epstein Koretzky

Alicia Lepke

David & Jackie Michel
Daughters-Sarah & Rebecca

Natalie Miller
Son-Donavan

Aaron & Elisa Nelson
Son-Reed

Gwynne Williams and Paula Silbowitz
Son-Toby



Temple Traditions Gift Shop

Visit www.ourtemple.org and click Gift Shop under "Support Our Temple"

Don't forget to register with us for your wedding or Bar/Bat Mitzvah gifts!! We have a wide variety of beautiful Jewish ritual items, including gorgeous silver kiddush cups. Our inventory changes often, so come visit and see what's new!!

Temple Traditions is a gift shop run by the Sisterhood of Temple Emanu-El. Our hours of operation are:

Tuesday 10:00a.m. - 2:00p.m.

Wednesday 10:00a.m. - 2:00 p.m. and 3:30-5:30p.m.

Thursday 10:00a.m. - 2:00p.m.

Friday 10:00a.m. - 2:00p.m.

Sunday 9:30a.m. - 12:00p.m.

OUR SPONSORS



Cathy Rogoff

C: 205.266.5944
F: 205.877.9280

mushreality@aol.com
www.cathyrogoff.com

2807 Cahaba Rd.
Birmingham, AL



*It's not just about selling you
a house, it's about finding
you a home!*



BAR & BAT MITZVAHS, WEDDINGS,
CORPORATE & SOCIAL EVENTS
CALL JOY OR BRENDA
(404) 257-0206

www.vibeentertainmentnc.com

SUNLIGHT
BUILDING SERVICES

Commercial Office Buildings
Exterior Services
Residential Window Cleaning

(205) 945-8929



Cathy O. Friedman

205-226-0125
cathy@citpapercompany.com

Innovative T-shirts
Gifts • Souvenirs • Business
Items for Every Occasion



Liturgical Publications Inc
Connecting Your Community™

*For Advertising
Information Call*

1-800-477-4574

or 216-325-6825

LET US PLACE
YOUR AD HERE.

**GET IN TOUCH WITH YOUR
COMMUNITY!**

Potential Customers Are Reading
This Publication Right Now!

Call LPI at **1-800-477-4574**
to Find out How You Can
Advertise Your Business.



**JOHN RIDOUT'S FUNERAL PARLORS
& CREMATION SERVICES**

2116 University Boulevard
Birmingham, Alabama 35233

(205) 251-5254



**TIME TO
ADVERTISE?**

If you feel your
business needs a little
more attention,
give LPI a call at...
1-800-477-4574

**THIS SPACE IS
AVAILABLE**

Call LPI at
1.800.477.4574
for more
information.

ARE YOU LIVING ALONE?
What if you fell and could not reach a telephone?



Lifewatch, the Personal Emergency Response System, can get you help with just a press of the lightweight waterproof button! Referred by doctors, hospitals and social workers. Personal Caring Service Since 1980. Nationwide Service.

TOLL FREE 1-800-998-5601 www.Lifewatch-USA.com

Lifewatch helps people who live alone keep their independence.

You're Never Alone With Lifewatch!



Specials
\$12.95
a Month

LIFEWatch USA
Personal Caring Service Since 1980



AARP
Discounts

BBB
TV



FOR ADVERTISING INFORMATION CALL

(800) 477-4574 or

(216) 325-6825

Liturgical Publications Inc
Connecting Your Community™



For Advertising Information, call
ROBIN ELLIOTT at LPi today!

1.800.477.4574 • 216.325.6825 ext 304
RElliott@4LPi.com

Charles R. Tourney
Vice President & General Manager



Memorials of Marble, Granite & Bronze
Mausoleums
Plaques & Letters For Buildings
Commercial Sandblasting & Signage
308 6th Avenue, S.W. • Birmingham
Toll Free: 800-239-8310 • Res.: 988-0862
Office: 328-8310 • Fax: (205) 328-0404

TIME TO ADVERTISE?

*If you feel your
business needs a
little more attention,
give LPi a call at...
1-800-477-4574*

Tom Cowen
(205) 870-0115
3900 Montclair Rd., Ste. 280
Mountain Brook
ThomasCowen@allstate.com



Allstate
You're in good hands.

©2009 Allstate Insurance Company allstate.com

Support Our Advertisers

Check the ads on this page before you
check the yellow pages.

What Better Way to Spread the Word!

Hundreds of thousands of businesses nation-wide use newsletters to obtain new customers and reinforce existing relationships with their current customers. It is a proven, cost-effective method of advertising that gets noticed by a loyal community-based audience. Every month members religiously read these materials, and most hold onto them until the following issue is distributed. Advertising in these publications lets you reach desirable customers in your business area. What's more, it delivers a very positive impression about your business.

We create, produce, and print the ad, all within your specific advertising budget. Since 1972, Liturgical Publications has been at the forefront of communications advertising, currently serving 80,000 businesses on over 2,500 publications. These publications are read by more than 6 million people weekly. We want to make your experience with us both simple and effective. Which is why we'll not only create your ad, we'll also change it up to four times a year, absolutely free. It's one more way we exceed your advertising expectations.



Liturgical Publications Inc
Connecting Your Community™

SPREAD THE GOOD WORD ABOUT YOUR BUSINESS.

For more information on this powerful method of advertising,

call LPi today.

1-800-477-4574 or 216-325-6825

Temple Emanu-El
2100 Highland Avenue
Birmingham, AL 35205

Postmaster: Time Sensitive Material.
Please deliver immediately.

Address Service Requested

Are you moving? Do we have your correct address?
Please let us know by e-mail: marianne@ourtemple.org

NONPROFIT ORG.
U.S. POSTAGE
PAID
Birmingham, AL
Permit No. 1137

This issue of OurTemple bulletin is made possible through the generous support of the Temple Emanu-El Brotherhood.

Healing Shabbat

October 9, 10:30a.m.

*All of us go through times in our lives
when we are not whole.*

*Whether it is illness, trouble at work,
loss of a loved one, or anything else,
we are all in need of healing.*

*Join Rabbi Scott and Cantor Roskin
for a Shabbat service that includes
special readings and music about
finding a way toward wholeness.*



OurTemple

The Monthly Bulletin for Temple Emanu-El

Founded in 1882 and affiliated
with the Union for Reform Judaism.

www.ourtemple.org

205/933-8037 FAX 205/933-8099

Clergy

Jonathan A. Miller.....Rabbi
Jessica RoskinCantor
Scott Hausman-WeissRabbi/Director, Cong.
Education & Outreach

Senior Staff

Alan R. PearlmanExecutive Director
Cathy MooreDirector, Early Childhood Ed.
Jann BlitzEndowment Fund
Executive Director

The Board of Directors

Mackie HorowitzPresident
Sherron GoldsteinPresident-Elect
Robin BergerVice President
Helene ElkusVice President
Ronald LevittVice President
Julie Levinson-GabisSecretary
David BrandtTreasurer
Lynne CohenImmediate Past President

David Aarons	Justin Ladden
Charles Bloom	Julie Marcus
Jason Epstein	Joel Piassick
Larry Goldberg	Carole Pizitz
Richard Goldstein	Steve Royal
Anna Slive Harwood	Jason Ruha
Ginger Held	Michael Tucker
Joe Lichtenstein	Ben Weil
Mike Koslin	Ryan Weiss

In the event of a family emergency
after hours, please contact us:

Rabbi Jonathan Miller: 223-0916

Cantor Jessica Roskin: 266-6549

Rabbi Scott Hausman-Weiss: 612-7824

Our mission: Temple Emanu-El is a welcoming Reform Jewish congregation, engaging members in prayer, study, fellowship and acts of loving kindness to our congregational family and the community-at-large.



SAVE THE DATE

SATURDAY, APRIL 9, 2011
TEMPLE EMANU-EL
PRESENTS

“DANCING WITH OUR STARS” A NIGHT OF BALLROOM MAGIC

SIX TEMPLE EMANU-EL STARS WILL PARTNER WITH
A WORLD CLASS PROFESSIONAL DANCE PARTNER
FOR THE PRESTIGIOUS TITLE OF

“TEMPLE EMANU-EL CHAMPION BALLROOM DANCER”

FEATURING

***FABIAN AND JACKIE SANCHEZ**

*ABC “DANCING WITH THE STARS” VETERAN
*“SO YOU THINK YOU CAN DANCE” CHOREOGRAPHER
OWNERS, FRED ASTAIRE DANCE STUDIO

Attention
Sisterhood Members
Past, Present and Future...

Have you paid
your '10-'11 dues?

Paid-up members
please join us
for
A night of wine, nibbles and fun!

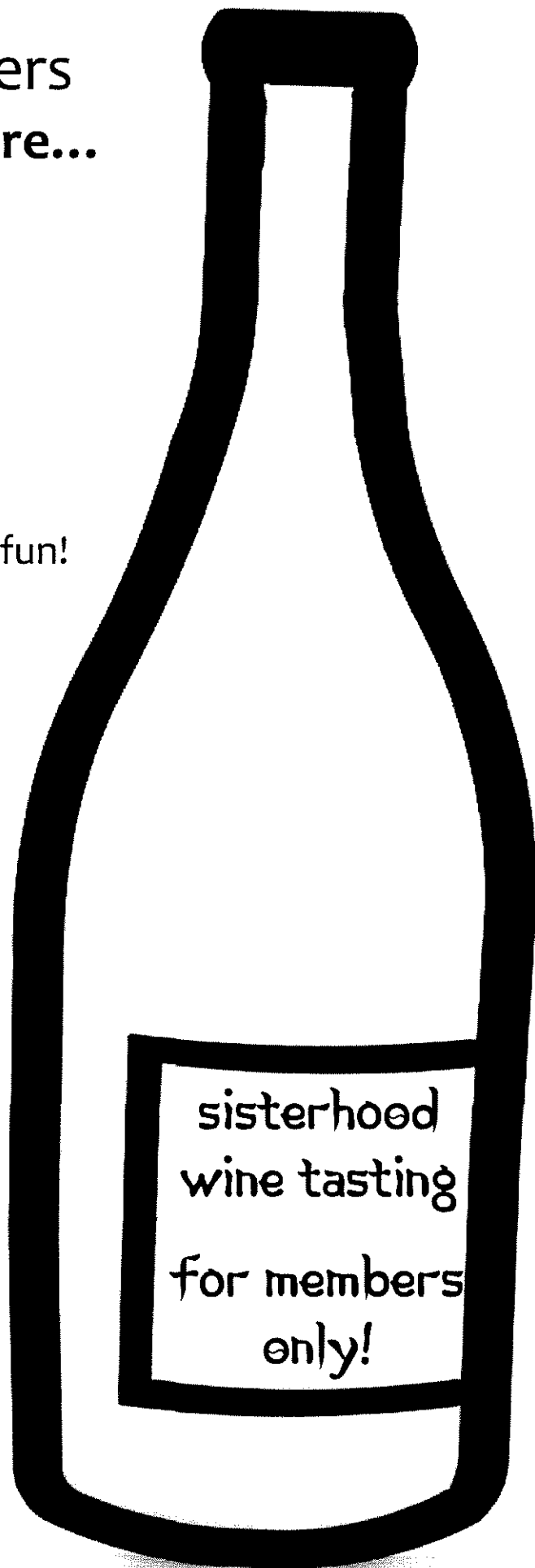
October 7 @ 7pm

4931 Cold Harbor Drive -
home of Debbie Wiatrak

Please RSVP by Oct. 4 to
Lisa Bebenek 969-2646
or pbebenek@aol.com

Door Prizes...
Discounted wine for purchase...
Guided tasting...
Don't miss it!

~over~



TO ALL SISTERHOOD MEMBERS

After 34 Years...

*The Sisterhood of Temple Emanu-El
has rewritten its by-laws!*

As we move into the future, we wanted to have a document that
represented the way we operate today...
including current officer positions & duties...
& correct identification of organizations we are affiliated with...

to accomplish this...

We will be voting on the adoption of these new by-laws on **Tuesday, November 2, 2010 between 6:00 – 6:30pm**. We will have appetizers & wine and Margo Pitt will be answering any questions before the vote.

**All paid Sisterhood members for the 2010-11 year
are invited to attend and vote.**

There is a copy of the old & new by-laws on the Temple website
accessed from the Sisterhood page and also at the Temple
offices for your review.

If you have any questions or comments and to RSVP, please contact
Barbara Zaslofsky at az2al@bellsouth.net or 991-3025

or

Lori Weil at wimmysgirl1@aol.com or 956-4195
(Co-presidents)



*Temple Emanu-El
Bingo Bash
Sunday*

November 7, 2010

5:00pm - 7:00pm

\$36/Family \$18/Individual

*Includes dinner and one bingo card per person
Additional cards will be on sale for \$5 Cash bar*

*Babysitting will be provided for children 5 and under
Your check is your reservation.*

Please let us know by October 27, 2010

*Please call Jennifer Nemet #588-2331 or Lisa Bebenek #969-2646
with questions or concerns.*



OCTOBER 2010 TISHREI - CHESHVAN 5771

SUNDAY	MONDAY	TUESDAY	WEDNESDAY	THURSDAY	FRIDAY	SATURDAY
31 9:30am Religious School 6th Grade B'Nai Mitzvah Class 9:30am Sisterhood Bulb Shop Opens		<i>Our Tzedakah Box Charity for the month is: Community Kitchens</i>			1 5:00pm Tot Shabbat "Got Shabbat?" 5:40pm Kabbalat Shabbat 5:50pm Candle Lighting, Simchat Shabbat Service Birthday Blessing for Oct. Children welcome, no childcare provided	2 Torah Portion: <i>B'reishit</i> 9:00am Torah Study 10:30am Shabbat Service Bat Mitzvah of Laine Meisler Childcare provided
3 9:30am Religious School Music & Story Telling with Jamie Grackin 9:30am Sisterhood Oy Vey Cafe 11:00am 5th Grade Art 1:00pm Sisterhood Scrapbooking Event	4	5 12:00pm Reconfirmation	6 3:30pm Hebrew School 5:45pm TEENS Hands On 1 & Confirmation	7 5:30pm TEE Chorale 7:00pm Sisterhood Paid-Up Member Wine Tasting Event	8 5:40pm Kabbalat Shabbat 5:50pm Candle Lighting Children welcome, no childcare provided	9 Torah Portion: <i>Noach</i> 9:00am Torah Study 10:30am Shabbat Healing Service Children welcome, no childcare provided
10 NO Religious School	11	12 12:00pm Reconfirmation	13 3:30pm Hebrew School NO TEENS NO Confirmation	14 5:30pm TEE Chorale	15 5:40pm Kabbalat Shabbat 5:50pm Candle Lighting, Shabbat Service Anniversary Blessing for Oct. Children welcome, no childcare provided	16 Torah Portion: <i>Lech L'cha</i> 9:00am Torah Study 10:30am Shabbat Service Children welcome, no childcare provided
17 9:30am Religious School 10:00am Kindergarten Parent/Child Workshop 10:00am Brotherhood Meeting with Guest Speaker Eddie Garfinkle	18	19 12:00pm Reconfirmation	20 3:30pm Hebrew School 5:45pm TEENS Hands On 2 & Confirmation	21 5:30pm TEE Chorale	22 5:40pm Kabbalat Shabbat 5:50pm Candle Lighting, Shabbat Service Guest Speaker Rabbi Landsberg Wedding Blessing of Andrea Engel and Kent Haines Children welcome, no childcare provided 6:45pm Dinner RSVP was required	23 Torah Portion: <i>Vayeira</i> NO Torah Study 10:30am Shabbat Service Bat Mitzvah of Jessica Sirkin Childcare provided
24 9:30am Religious School 11:00am 4th Grade in Art Room	25	26 12:00pm Reconfirmation	27 3:30pm Hebrew School 5:45pm TEENS Hands On 3 & Confirmation	28 5:30pm TEE Chorale	29 5:40pm Kabbalat Shabbat 5:50pm Candle Lighting Children welcome, no childcare provided	30 Torah Portion: <i>Chayei Sarah</i> 9:00am Torah Study 9:30am Tot Shabbat 10:30am Shabbat Service Children welcome, no childcare provided